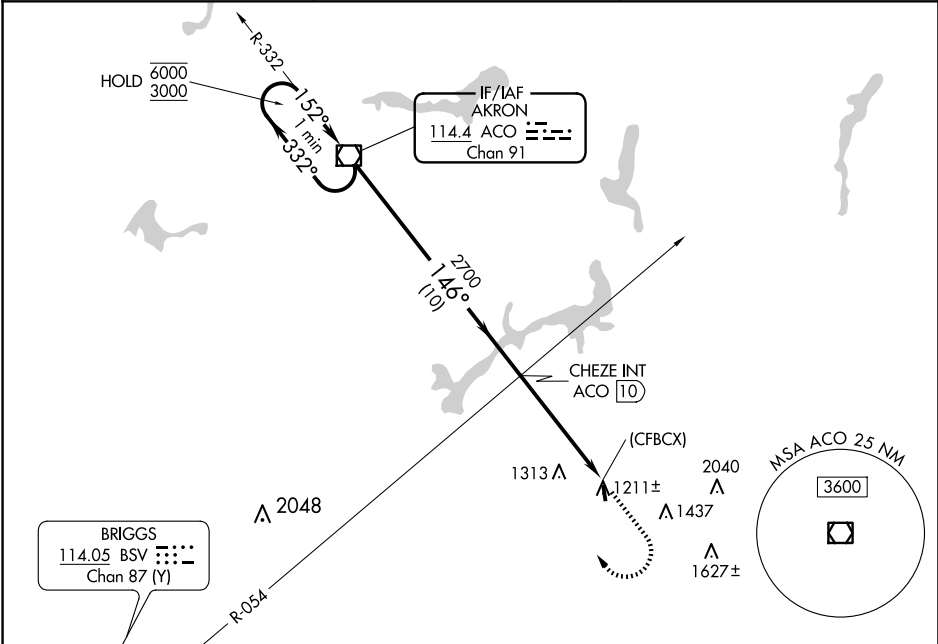


VOR/DME ACO	APP CRS	Rwy Idg	2768
114.4	146°	TDZE	1188
Chan 91		Apt Elev	1188

VOR RWY 18  
TRI-CITY (3G6)

<div><div><div></div><div></div><div></div></div><div>NA</div></div> <div>Procedure NA at night. Rwy 18 helicopter visibility reduction below 1 SM NA. Use Akron-Canton Rgnl altimeter setting, when not received, use Ravenna altimeter setting.</div>	<div>MISSED APPROACH: Climb to 3000 then climbing right turn to 3100 direct ACO VOR/DME and hold.</div>	
<div>CAK ASOS</div> <div>121.05</div>	<div>CLEVELAND APP CON ★</div> <div>125.5 371.875</div>	<div>CTAF</div> <div>122.9 0</div>



One Minute Holding Pattern		ACO VOR/DME		3000	3100	ACO
6000 ← 332°		152° →		146°		
3000				CHEZE INT ACO 10		
				2700		
				2.79° TCH 40		
				10 NM	4.8 NM	0.2 NM
CATEGORY	A	B	C	D		
S-18	1680-1	492 (500-1)	NA			
CIRCLING	1680-1 492 (500-1)	1800-1 612 (700-1)	NA			

ELEV 1188	TDZE 1188
146°	
81	
2768 X 45	
36	
LIRL Rwy 18-36 0	
FAF to MAP 4.8 NM	
Knots	60 90 120 150 180
Min:Sec	4:48 3:12 2:24 1:55 1:36