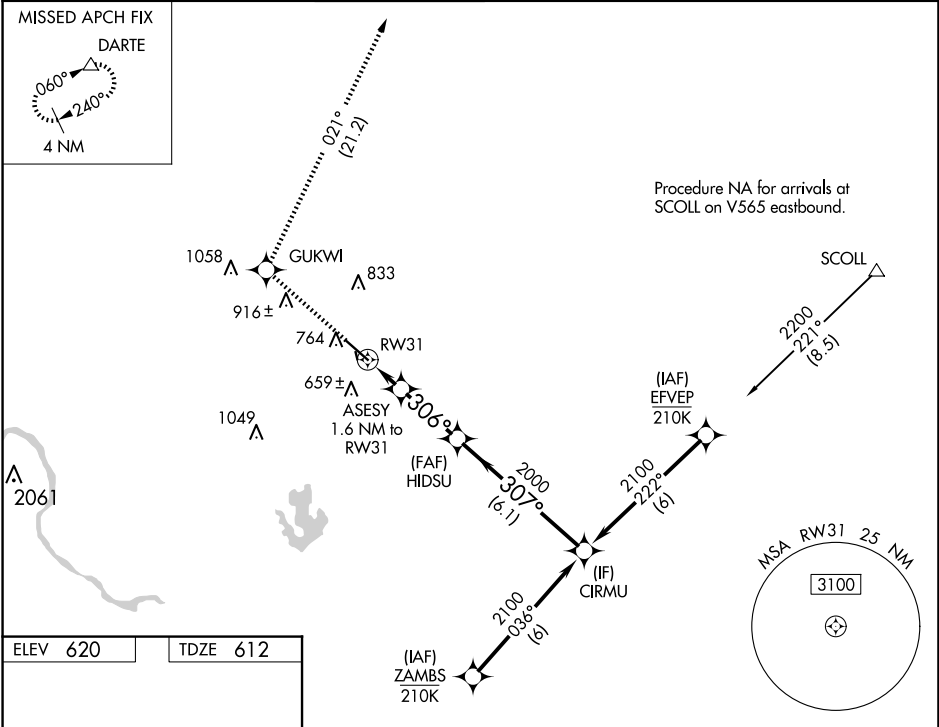


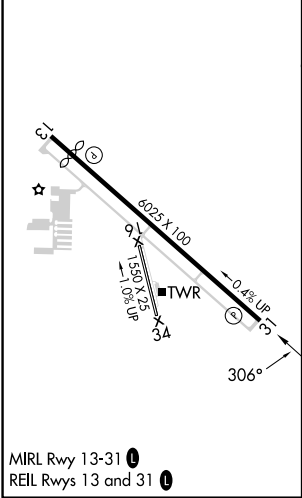
WAAS CH 45916 W31A	APP CRS 306°	Rwy Idg 6025 TDZE 612 Apt Elev 620
--	------------------------	---

RNAV (GPS) RWY 31
AUSTIN EXEC (EDC)

RNP APCH - GPS.				MISSED APPROACH: Climb to 3500 direct GUKW1 and on track 021° to DARTE and hold.	
⚠ Circling NA to Rwys 16 and 34. For uncompensated Baro-VNAV systems, LNAV/VNAV NA below -16°C or above 54°C.					
AWOS-3 118.825	AUSTIN APP CON 127.225 317.65	EXECUTIVE TOWER★ 120.3 (CTAF) 0	GND CON 119.45	CLNC DEL 126.025 (When twr closed)	UNICOM 122.975



ELEV 620	TDZE 612
-----------------	-----------------



3500	GUKW1	tr 021°	DARTE	CIRMU
CATEGORY				
LPV DA				
LNAV/VNAV DA				
LNAV MDA				
CIRCLING				