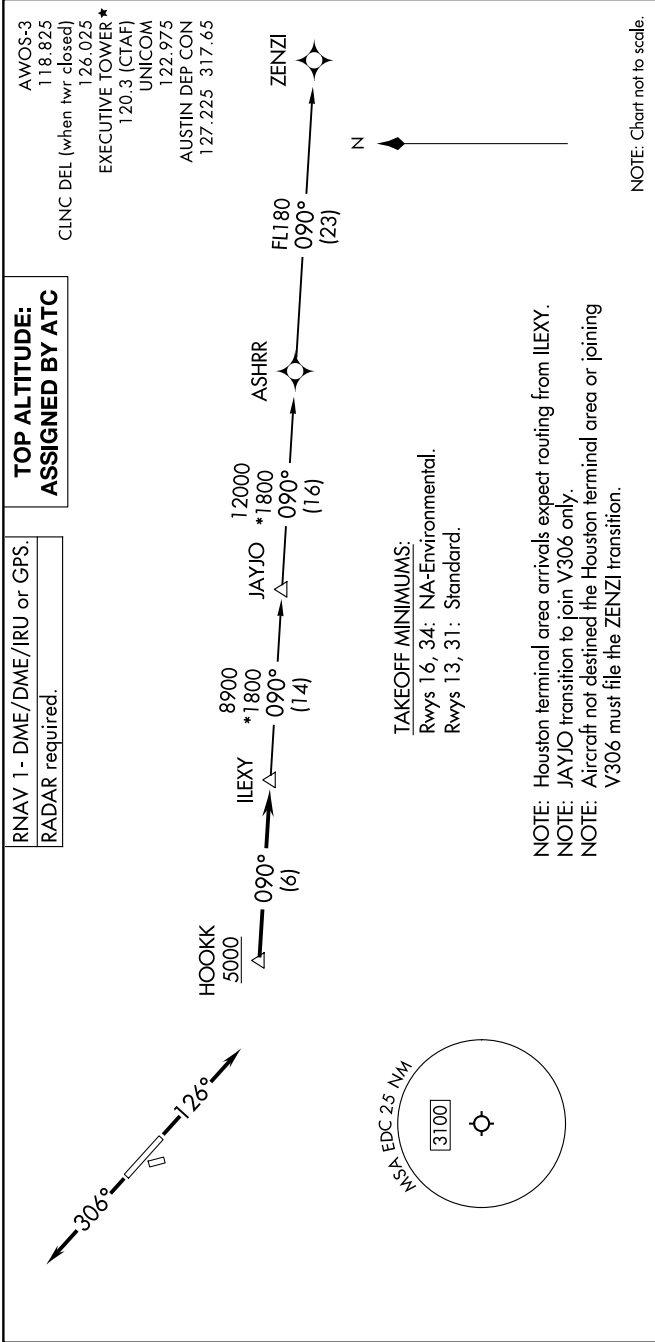


(ILEXY4.ILEXY) 23166  
ILEXY FOUR DEPARTURE (RNAV)

AL-5891 (FAA)

AUSTIN EXEC (EDC)  
AUSTIN, TEXAS



DEPARTURE ROUTE DESCRIPTION

TAKEOFF RUNWAY 13: Climb on heading 126° or as assigned by ATC for vectors to cross HOOKK at or above 5000, thence, . . .  
TAKEOFF RUNWAY 31: Climb on heading 306° or as assigned by ATC for vectors to cross HOOKK at or above 5000, thence, . . .  
... on track 090° to ILEXY, then on transition. Maintain altitude assigned by ATC. Expect filed altitude 10 minutes after departure.

JAYJO TRANSITION (ILEXY4.JAYJO)  
ZENZI TRANSITION (ILEXY4.ZENZI)

ILEXY FOUR DEPARTURE (RNAV)  
(ILEXY4.ILEXY) 15JUN23

AUSTIN, TEXAS  
AUSTIN EXEC (EDC)