

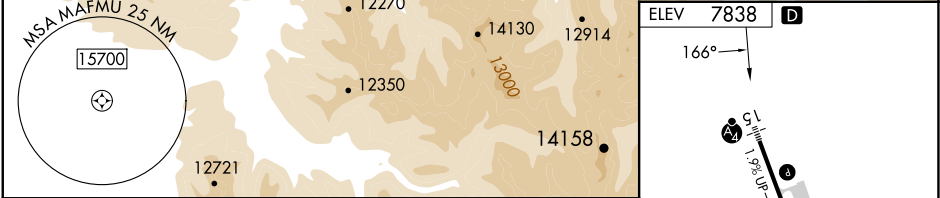
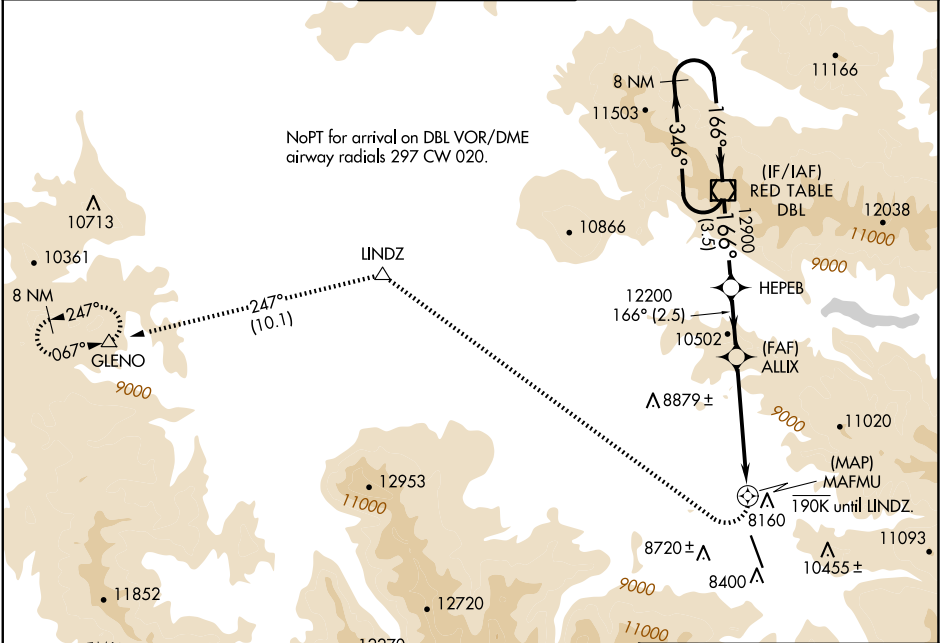
APP CRS	Rwy Ldg TDZE	N/A
166°	Apt Elev	N/A
		7838

RNAV (GPS)-F

ASPEN-PITKIN COUNTY/SARDY FLD (ASE)

	When local altimeter setting not received, procedure NA. DME/DME RNP-0.3 NA. Visibility reduction by helicopters NA. Procedure NA at night. Circling NA for Cat C southwest of Rwy 15-33.	MISSED APPROACH: Climbing right turn to 14000 direct LINDZ and on track 247° to GLENO and hold.
--	---	---

ATIS	ASPEN APP CON *	ASPEN TOWER *	GND CON	CLNC DEL	UNICOM
120.4	123.8 288.3	118.85 (CTAF) 0 288.3	121.9	123.75	122.95



VGSIs and descent angles not coincident (VGSIs Angle 3.50/TCH 55).				
8 NM Holding Pattern	DBL VOR/DME	HEPEB	ALLIX	MAFMU
13700	12900	12200	14000	14158
346°	166°	166°	6.49° TCH 55	247°
3.5 NM 2.5 NM 5 NM 1.5 NM				
CATEGORY	A	B	C	D
CIRCLING	10200-1 3/4 2362 (2400-1 3/4)	10220-1 3/4 2382 (2400-1 3/4)	10960-3 3122 (3200-3)	NA

ELEV	7838	D
166°		
1.96 NM		
3006x100		
2.0% DOWN		
33		
REIL Rwy 15		
REIL Rwy 33		
MIRL Rwy 15-33		

RNAV (GPS)-F

SW-1, 10 JUL 2025 to 07 AUG 2025

SW-1, 10 JUL 2025 to 07 AUG 2025