

APP CRS
070°

Rwy Ldg
TDZE
Apt Elev

N/A
N/A
133

RNAV (GPS)-A
DILLON COUNTY (DLC)

RNP APCH - GPS.

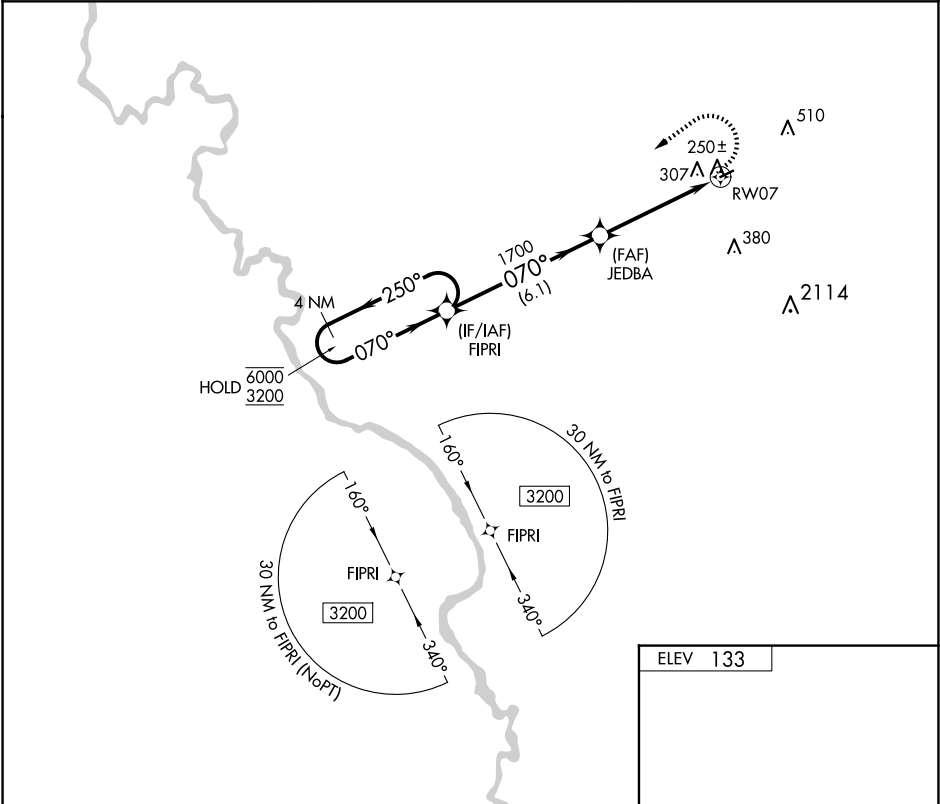
▼

NA

Rwy 7, 25 helicopter visibility reduction below 1 SM NA. Procedure NA at night.
Use FLO altimeter setting; when not received, procedure NA.

MISSED APPROACH: Climbing left turn to 3200 direct FIPRI and hold, continue climb-in-hold to 3200.

FLO ASOS 123.625	FLORENCE APP CON ★ 118.6 341.7	CTAF 122.9
----------------------------	------------------------------------------	----------------------



4 NM Holding Pattern

Visual Segment - Obstacles.

3200 FIPRI

6000 3200

250° 070°

JEDBA 1700

RW07

6.1 NM 4.8 NM

CATEGORY

A

B

C

D

CIRCLING

720-1 587 (600-1)

920-2¼ 787 (800-2¼)

NA

ELEV 133

25

0.5% UP

3000 X 60

070°

MIRL Rwy 7-25