
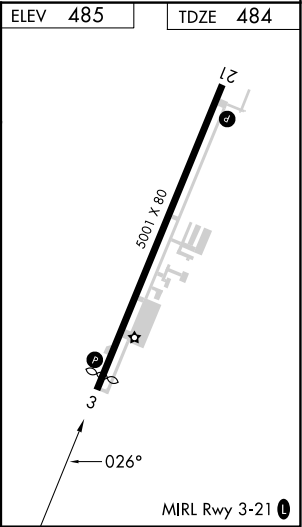
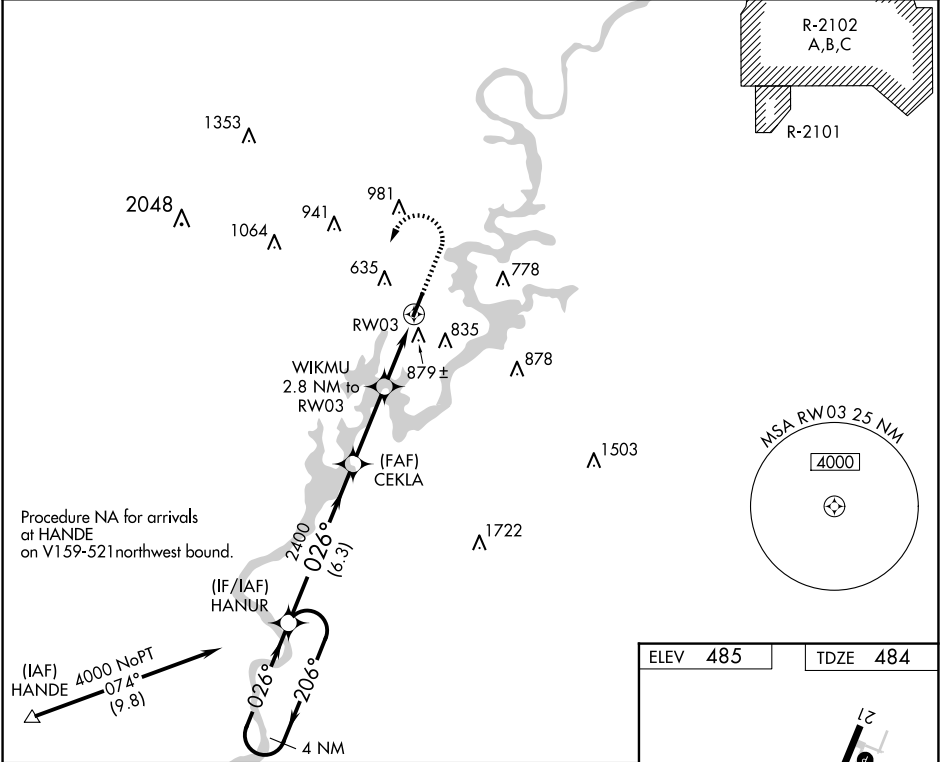


WAAS CH 70540 W03A	APP CRS 026°	Rwy Idg TDZE Apt Elev	4771 484 485
--	------------------------	-----------------------------	---

RNAV (GPS) RWY 3
ST CLAIR COUNTY (PLR)

 DME/DME RNP-0.3 NA. VDP NA when using Anniston altimeter setting. Rwy 3, helicopter visibility reduction below 3/4 SM NA. When local altimeter setting not received, use Anniston altimeter setting and increase all DA 63 feet and all visibility 1/4 SM, increase all MDA 80 feet and LNAV Cat C/D visibility 1/8 SM and Circling Cat C/D 1/4 SM.	MISSED APPROACH: Climb to 1200, then climbing left turn to 4000 direct HANUR and hold, continue climb-in-hold to 4000.
--	--

AWOS-3P 119.625	BIRMINGHAM APP CON 123.8 256.8	GCO 121.725	UNICOM 123.05 (CTAF) 0
---------------------------	--	-----------------------	----------------------------------



SE-4, 10 JUL 2025 to 07 AUG 2025

SE-4, 10 JUL 2025 to 07 AUG 2025