

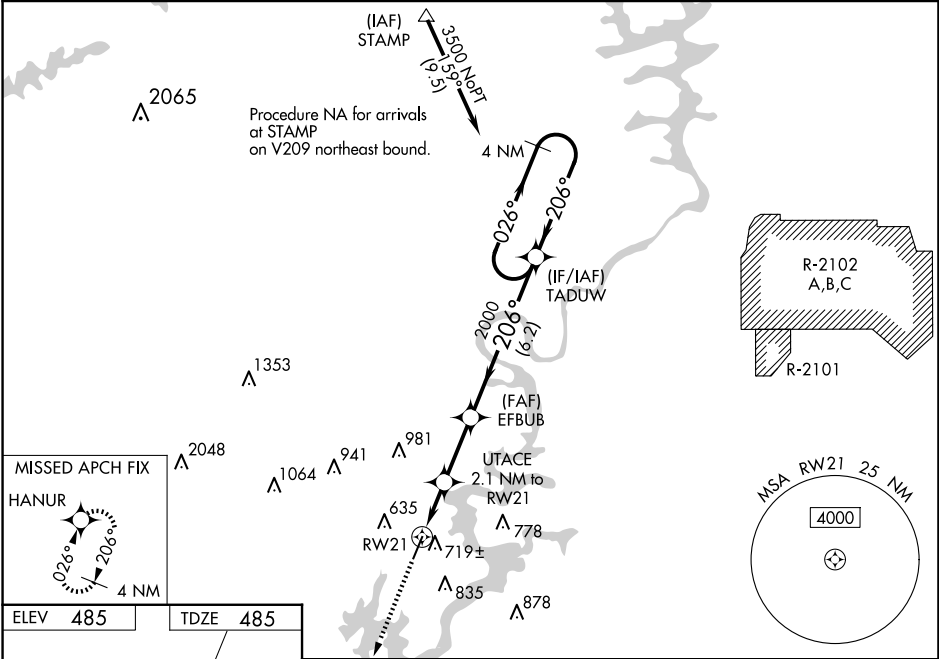
WAAS CH <b>78304</b> <b>W21A</b>	APP CRS <b>206°</b>	Rwy Idg TDZE <b>485</b> Apt Elev <b>485</b>
--	------------------------	---

RNAV (GPS) RWY 21  
ST CLAIR COUNTY (PLR)

DME/DME RNP-0.3 NA. When local altimeter setting not received, use Anniston altimeter setting and increase LPV DA to 799 feet and all Cats visibility to 1, increase LNAV/VNAV DA to 964 feet and all visibilities to 1½, increase all MDA 80 feet and LNAV Cat C/D to 1¼ and Circling Cat C to 2½ and Cat D to 3. For uncompensated Baro-VNAV systems, LNAV/VNAV NA below -15°C (5°F) or above 54°C (130°F). Baro-VNAV and VDP NA when using Anniston altimeter setting.

MISSED APPROACH:  
Climb to 4000 direct HANUR and hold, continue climb-in-hold to 4000.

AWOS-3P <b>119.625</b>	BIRMINGHAM APP CON <b>123.8 256.8</b>	GCO <b>121.725</b>	UNICOM <b>123.05 (CTAF)</b>
---------------------------	--	-----------------------	--------------------------------



ELEV **485** TDZE **485**

4000 HANUR

\*LNAV only. UTACE 2.1 NM to RW21

\*1.4 NM to RW21

EFBUB 2000

TADUW 4 NM Holding Pattern

3500

GP 3.00° TCH 53

CATEGORY	A	B	C	D
LPV DA		735-¾	250 (300-¾)	
LNAV/VNAV DA		900-1¾	415 (500-1¾)	
LNAV MDA	980-1	495 (500-1)	980-1¾	495 (500-1¾)
CIRCLING	1180-1	695 (700-1)	1240-2¼ 755 (800-2¼)	1340-2¾ 855 (900-2¾)