

WAAS CH 99304 W22A	APP CRS 227°	Rwy Idg 5000 TDZE 1642 Apt Elev 1642
--	------------------------	---

RNAV (GPS) RWY 22

EAGLE RIVER UNION (EGV)

RNP APCH - GPS

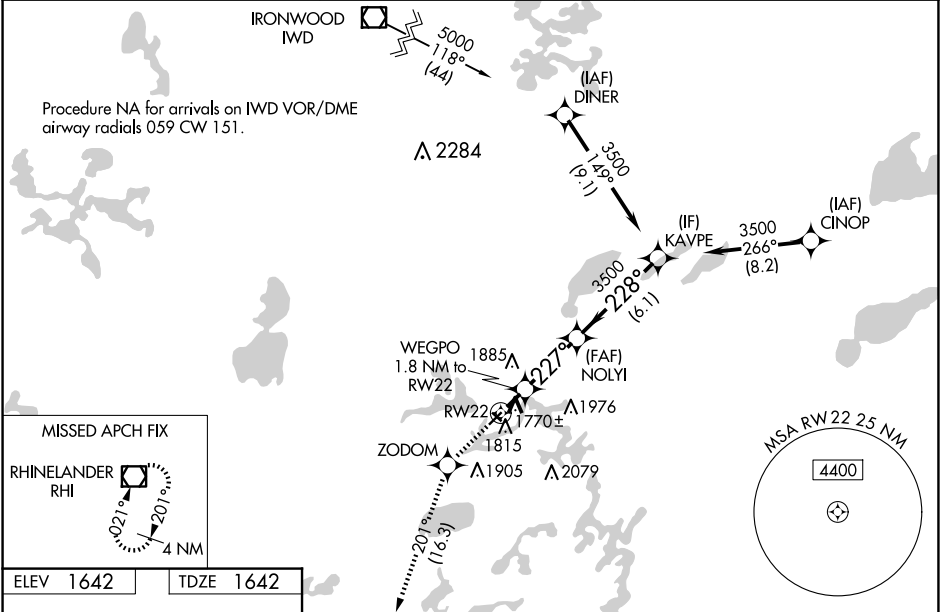
▼

▲

Baro-VNAV and VDP NA when using ARV altimeter setting. For uncompensated Baro-VNAV systems, LNAV/VNAV NA below -18°C or above 54°C. Rwy 22 helicopter visibility reduction below ¾ SM NA. Circling Rwy 13 and 31 NA at night. When local altimeter setting not received, use ARV altimeter setting and increase LPV DA to 2013 feet; increase LNAV/VNAV DA to 2085 feet and all visibilities ¼ SM. Increase all MDAs 60 feet and LNAV visibility Cat C/D ¼ SM, and Circling visibility Cat C/D ¼ SM.

MISSED APPROACH:
Climb to 3500 direct ZODOM and on track 201° to RHI VOR/DME and hold.

AWOS-3 118.325	MINNEAPOLIS CENTER 133.65 281.5	UNICOM 122.8 (CTAF) 0
--------------------------	---	---------------------------------



3500

ZODOM

tr 201°

RHI

VGSI and RNAV glidepath not coincident (VGSI Angle 3.00/TCH 34).

3500

227°

2260

3500

228°

3500

WEGPO 1.8 NM to RW22

1.2 NM to RW22

0.7 NM

3.9 NM

6.1 NM

GP 3.00°

TCH 40

CATEGORY	A	B	C	D
LPV DA	1966-1		324 (400-1)	
LNAV/VNAV DA	2038-1½		396 (400-1½)	
LNAV MDA	2040-1	398 (400-1)	2040-1½	398 (400-1½)
CIRCLING	2120-1	478 (500-1)	2260-1¾ 618 (700-1¾)	2340-2¼ 698 (700-2¼)