

WAAS
CH **86735**
W36A

APP CRS
001°

Rwy Idg
TDZE **401**
Apt Elev **402**

RNAV (GPS) RWY 36
OLIVE BRANCH/TAYLOR FLD (OLV)

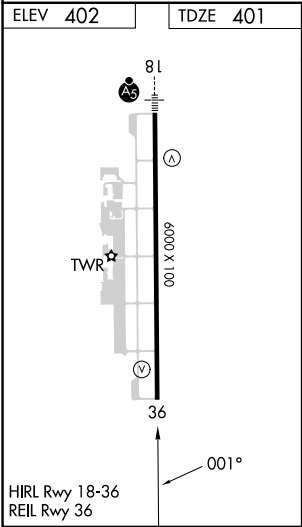
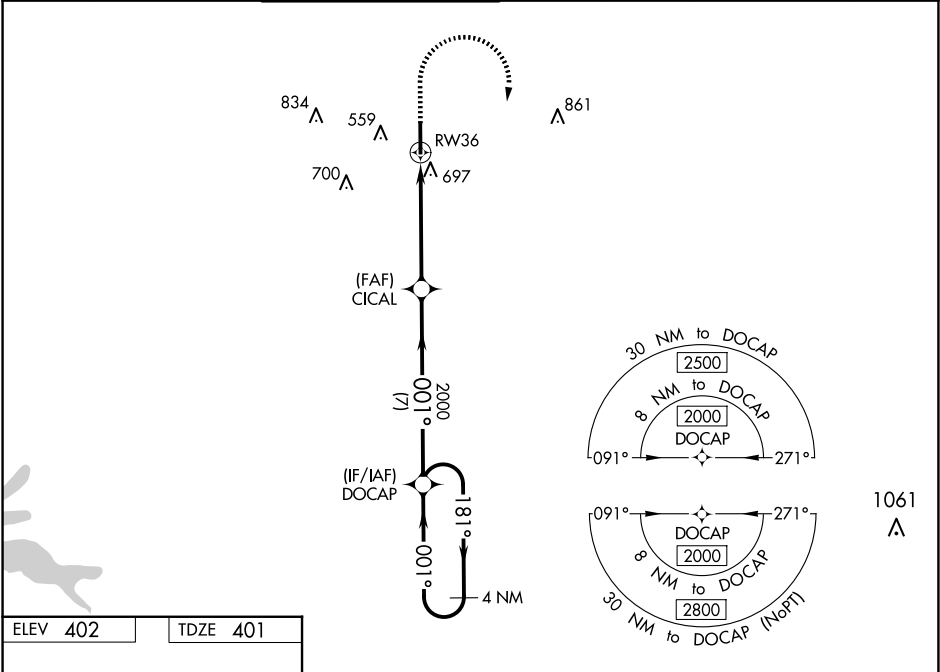
▼

⚠

For uncompensated Baro-VNAV systems, LNAV/VNAV NA below -1.5°C (5°F) or above 54°C (130°F). DME/DME RNP-0.3 NA. When local altimeter setting not received, use Memphis Int'l altimeter setting and increase all DA 32 feet and all MDA 40 feet; increase LPV and LNAV/VNAV all Cats and LNAV Cats C and D and Circling Cats C and D visibility ¼ mile. VDP and Baro-VNAV NA with Memphis Int'l altimeter setting. Rwy 36 helicopter visibility reduction below ¾ SM NA.

MISSED APPROACH:
Climb to 1500 then
climbing right turn
to 2000 direct
DOCAP and hold.

ATIS 119.925	MEMPHIS APP CON 125.8 338.3	OLIVE BRANCH TOWER ★ 125.275 (CTAF) 0	GND CON 121.2	CLNC DEL 121.2	CLNC DEL 121.3 (When twr closed)	UNICOM 122.95
------------------------	---------------------------------------	---	-------------------------	--------------------------	---	-------------------------



1500	2000	DOCAP	VGSi and RNAV glidepath not coincident (VGSi Angle 3.00/TCH 31).			
*LNAV only		*1.8 NM to RW36	CICAL	DOCAP	4 NM Holding Pattern	
RW36		1.8 NM	3.1 NM	7 NM	181°	2000
					001°	GP 3.00° TCH 45
CATEGORY	A	B	C	D		
LPV DA	709-1		308 (400-1)			
LNAV/VNAV DA	915-1¾		514 (600-1¾)			
LNAV MDA	1000-1	599 (600-1)	1000-1¾	599 (600-1¾)		
CIRCLING	1060-1	658 (700-1)	1060-1¾ 658 (700-1¾)	1200-2½ 798 (800-2½)		