

LOC/DME I-EVO 111.55 Chan 52 (Y)	APP CRS 001°	Rwy Idg 6000 TDZE 401 Apt Elev 402
------------------------------------------------------	------------------------	---------------------------------------------------------------

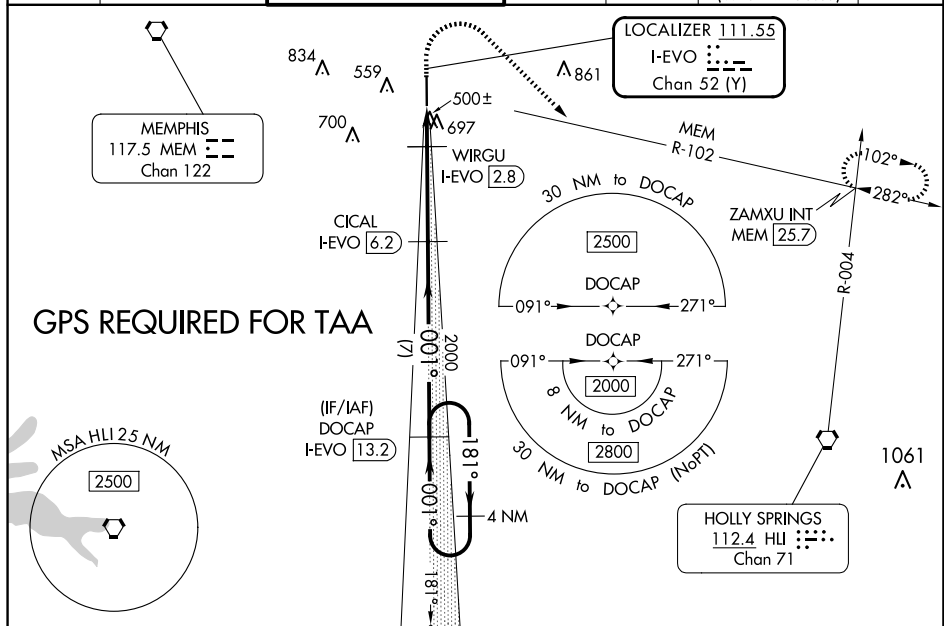
LOC RWY 36

OLIVE BRANCH/TAYLOR FLD (OLV)

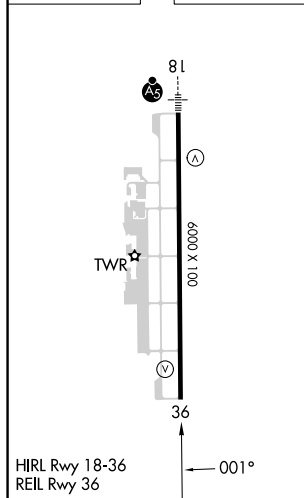
T When local altimeter setting not received, use Memphis Intl altimeter setting and increase all MDA 40 feet; increase S-LOC 36 Cats C and D visibility $\frac{1}{8}$ mile and Circling Cats C and D visibility $\frac{1}{4}$ mile. Rwy 36 helicopter visibility reduction below $\frac{3}{4}$ SM NA. DME required.

MISSED APPROACH: Climb to 1100 then climbing right turn to 2500 on heading 134° and MEM VORTAC R-102 to ZAMXU INT/MEM 25.7 DME and hold.

ATIS 119.925	MEMPHIS APP CON 125.8 338.3	OLIVE BRANCH TOWER ★ 125.275 (CTAF) 0	GND CON 121.2	CLNC DEL 121.2	CLNC DEL 121.3 (When twr closed)	UNICOM 122.95
------------------------	---------------------------------------	-------------------------------------------------	-------------------------	--------------------------	-----------------------------------------------	-------------------------



ELEV	402		TDZE	401
------	-----	--	------	-----



2000 NoPT to DOCAP
316° (3.1) and
LOC (9.9)

(CFBSN) X

(IAF)
VOSFY
HLL 17

ALTERNATE MISSED
APCH FIX

HOLLY SPRINGS
HLL 112.4
Chan 71

112°
292°-R-112

1100 2500
↑ hdg 134°

MEM R-102 ZAMXU INT

VGSI and descent angles not coincident
(VGSI Angle 3.00/TCH 31).

CICAL I-EVO 6.2 DOCAP I-EVO 13.2 4 NM Holding Pattern

WIRGU ≤ 3.00° TCH 45

I-EVO 1.3 I-EVO 2.8 860* 2000 001° 181° 2000 001°

*900 when using Memphis Intl altimeter setting.

CATEGORY	A	B	C	D
S-36	760-1 359 (400-1)			
CIRCLING	1060-1 658 (700-1)	1060-1 ³ / ₄ 658 (700-1 ³ / ₄)	1200-2 ¹ / ₂ 798 (800-2 ¹ / ₂)	

LOC RWY 36