

ILS or LOC RWY 18
OLIVE BRANCH/TAYLOR FLD (OLV)

MALSR

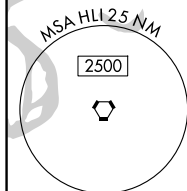
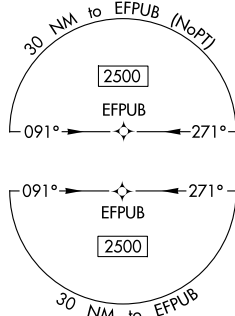
MISSED APPROACH: Climb to 1100 then climbing left turn to 2500 on heading 074° and on MEM VORTAC R-102 to ZAMXU INT/MEM 25.7 DME and hold.


ALTERNATE MISSED APCH FIX


HLI $\ddot{\text{O}}=\ddot{\text{O}}:$
112.4
 Chan 71



GPS REQUIRED FOR TAA



MEMPHIS
117.5 MEM 
Chan 122

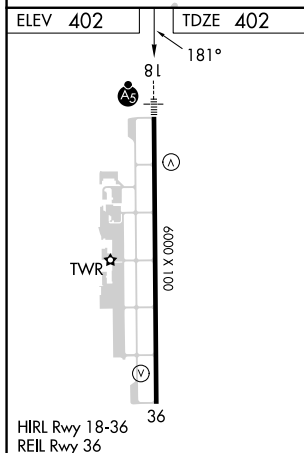
LOCALIZER 109.3
I-OLV 
Chan 30

MEM R-045 and HLI R-326 may be used to locate EFPUB intersection.

NUXAH INT
I-OLV 6

WIMUB INT
I-OLV 2.5

HOLLY SPRINGS
112.4 HLI ::::
Chan 71



One Minute or 4 NM Holding Pattern

EFPUB INT
I-OLV 11.9
RADAR

NUXAH INT
I-OLV 6
RADAR

WIMUB INT
I-OLV 2.5
I-OLV 1.1

*LOC only

2500 ← 001°
181° → 181°

*900 when using Memphis Intl altimeter setting.

GP 3.00°
TCH 51

2000

*860

5.9 NM 3.5 NM 1.4 NM

CATEGORY	A	B	C	D
S-ILS 18	602-½ 200 (200-½)			
S-LOC 18	860-½ 458 (500-½)		860-¾ 458 (500-¾)	
CIRCLING	1060-1 658 (700-1)		1060-1¾ 658 (700-1¾)	1200-2½ 798 (800-2½)
WIMUB FIX MINIMUMS (DUAL VOR RECEIVERS OR DME REQUIRED)				
S-LOC 18	760-½ 358 (400-½)		760-¾ 358 (400-¾)	
CIRCLING	1060-1 658 (700-1)		1060-1¾ 658 (700-1¾)	1200-2½ 798 (800-2½)