

WAAS CH 86805 W36A	APP CRS 005°	Rwy ldg TDZE 417 Apt Elev 418
--	------------------------	---

RNAV (GPS) RWY 36

PERRY-HOUSTON COUNTY (PXE)

RNP APCH-GPS.

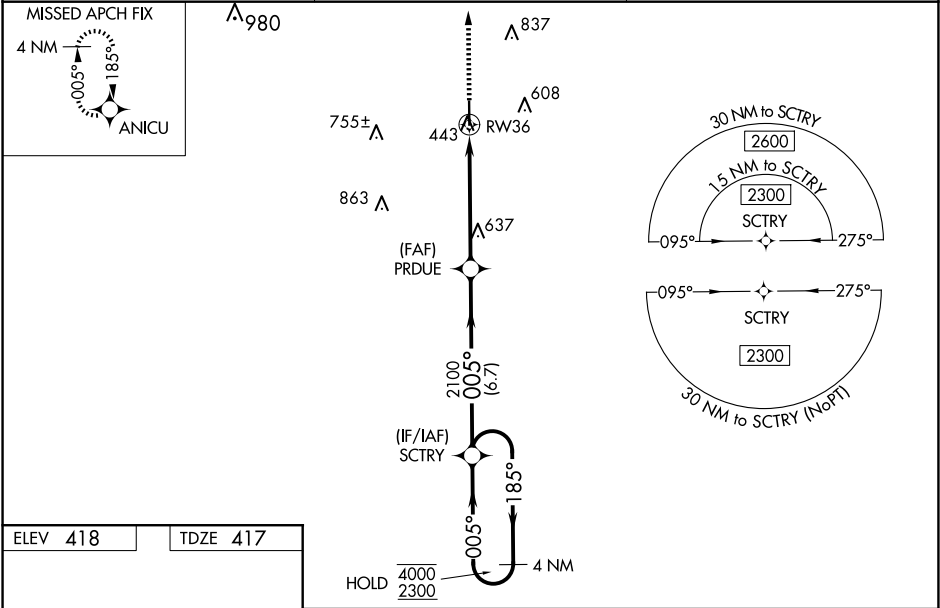
Baro-VNAV and VDP NA when using Middle Georgia Rgnl altimeter setting. Rwy 36 helicopter visibility reduction below ¾ SM NA. Inop table does not apply to LPV and LNAV/VNAV all Cats. For uncompensated Baro-VNAV systems, LNAV/VNAV NA below -15°C or above 54°C. When local altimeter setting not received, use Middle Georgia Rgnl altimeter setting and increase LPV DA and LNAV/VNAV DA to 705 feet; increase all MDAs 40 feet; and Circling visibility Cat C/D ¼ SM. For inop ALS, increase LNAV Cats A/B visibility to 1 SM and Cat C/D to 1 ¾ SM. For inop ALS, when using Middle Georgia Rgnl altimeter setting; increase LPV and LNAV/VNAV all Cats visibility to ¾ SM and LNAV Cat A/B visibility to 1 SM.

MALS

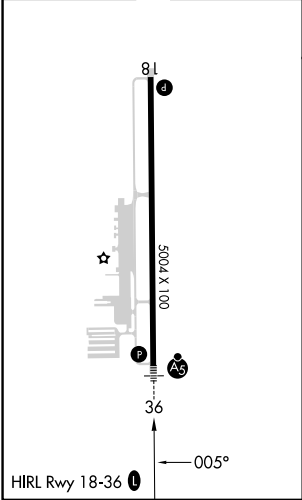
MISSED APPROACH:

Climb to 2300 direct ANICU and hold.

AWOS-3 123.825	ATLANTA APP CON ★ 124.2 279.6	UNICOM 122.725 (CTAF) 0
--------------------------	---	-----------------------------------



ELEV 418	TDZE 417
-----------------	-----------------



2300 ANICU

VGSI and RNAV glidepath not coincident (VGSI Angle 3.00/TCH 30).

PRDUE

SCTRY

4 NM Holding Pattern

185°

005°

4000

2300

GP 3.00° TCH 45

1.4 NM to RW36

2100

2100

1.4

3.7 NM

6.7 NM

CATEGORY	A	B	C	D
LPV DA	667-¾ 250 (300-¾)			
LNAV/ VNAV DA	667-¾ 250 (300-¾)			
LNAV MDA	900-¾ 483 (500-¾)	900-1 483 (500-1)		
CIRCLING	900-1 482 (500-1)	1140-2 722 (800-2)	1280-2¾ 862 (900-2¾)	