

LOC I-PXE <b><u>109.15</u></b>	APP CRS <b>005°</b>	Rwy Idg TDZE Apt Elev	<b>5004</b> <b>417</b> <b>418</b>
-----------------------------------	------------------------	-----------------------------	-----------------------------------------

ILS or LOC RWY 36  
PERRY-HOUSTON COUNTY (PXE)

DME or RADAR required
-----------------------

**▼** Autopilot coupled approach NA below 900. Rwy 36 helicopter visibility reduction below  $\frac{3}{4}$  SM NA. Inop table does not apply to S-LS-36. When local altimeter setting not received, use Middle Georgia Rgnl altimeter setting: increase all DA to 705 feet; increase all MDAs 40 feet and Circling visibility Cats C and D  $\frac{1}{4}$  SM. For inop ALS, increase S-LOC 36 Cats A/B visibility to 1 SM and Cats C/D to  $\frac{1}{8}$  SM. For inop ALS when using Middle Georgia Rgnl altimeter setting, increase S-LS all Cats visibility to  $\frac{7}{8}$  SM and S-LOC 36 Cats A/B visibility to 1 SM.

MALSR

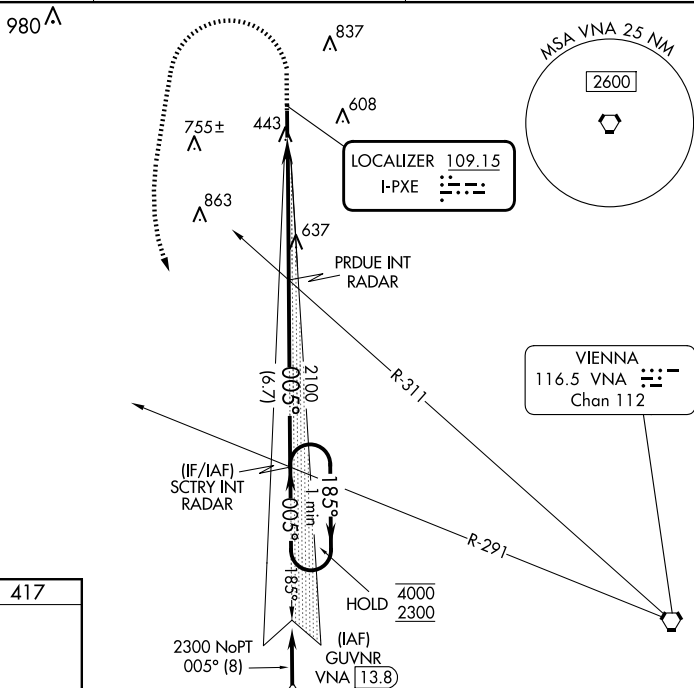


**MISSED APPROACH:** Climb to 1100 then climbing left turn to 2300 on heading 195° and VNA R-291 to SCTRY INT/ RADAR and hold.

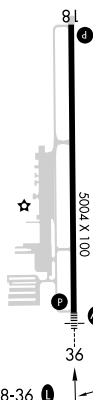
AWOS-3  
123.825


ATLANTA APP CON★  
124.2 279.6

UNICOM  
122.725 (CTAF) **L**



FIFV 418		TD7F 417
----------	--	----------



HIRL Rwy 18-36  005°

FAF to MAP 5.2 NM

Knots	60	90	120	150	180
Min:Sec	5:12	3:28	2:36	2:05	1:44

PERRY, GEORGIA  
Amdt 1 08SEP22

32°31'N-83°46'W

PERRY-HOUSTON COUNTY (PXE)  
ILS or LOC RWY 36

SE-4, 10 JUL 2025 to 07 AUG 2025