

WAAS CH <b>97702</b> <b>W07A</b>	APP CRS <b>068°</b>	Rwy Ldg <b>5004</b> TDZE <b>932</b> Apt Elev <b>949</b>
--	------------------------	---

RNAV (GPS) RWY 7

GREENE COUNTY/LEWIS A JACKSON RGNL (GDK)

RNP APCH - GPS.

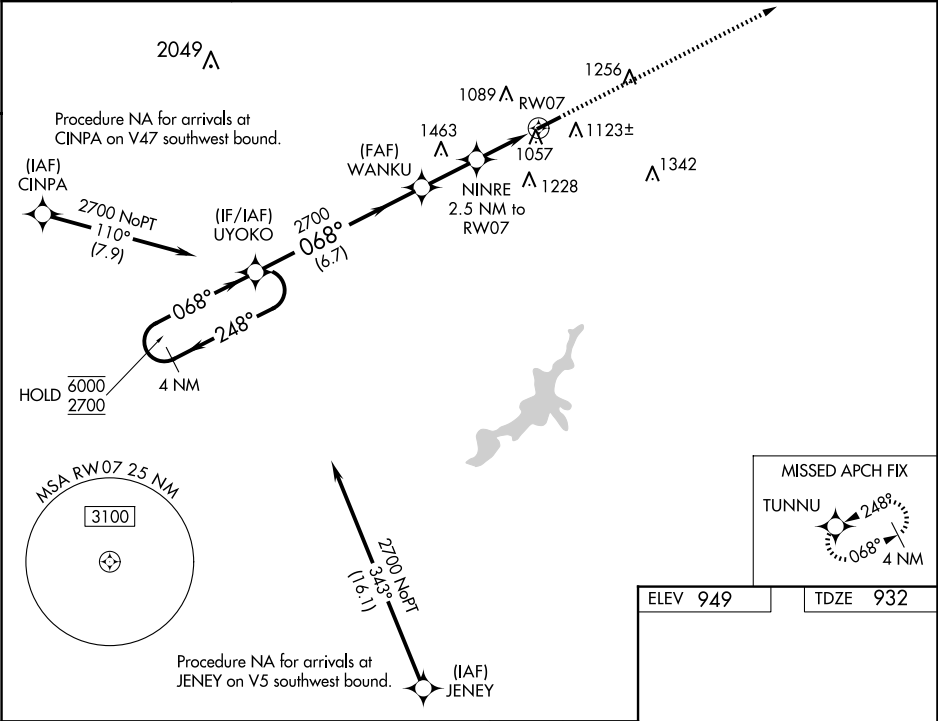
▼

⚠

When local altimeter setting not received, use Dayton/Wright Brothers altimeter setting: increase LPV DA to 1235 feet; increase LNAV/VNAV DA to 1268 feet; increase all MDA 40 feet and LNAV visibility Cat C ½ SM. Rwy 7 helicopter visibility reduction below ¾ SM NA. VDP and Baro-VNAV NA when using Dayton/Wright Brothers altimeter setting. For uncompensated Baro-VNAV systems, LNAV/VNAV NA below -16°C or above 54°C.

MISSED APPROACH:  
Climb to 2700 direct TUNNU and hold.

AWOS-3 <b>118.525</b>	COLUMBUS APP CON <b>118.85 269.275</b>	UNICOM <b>122.725 (CTAF) 0</b>
--------------------------	---	-----------------------------------



4 NM Holding Pattern		VGSI and RNAV glidepath not coincident (VGSI Angle 3.50/TCH 30).		2700	TUNNU
UYOKO		WANKU		NINRE	2.5 NM to RWY 7
6000 ← 248°		068° →		1 NM to RWY 7	RWY 7
2700		2700		1860	
GP 3.50°		6.7 NM		2.2 NM	1.5 NM
TCH 40					
CATEGORY	A	B	C	D	
LPV DA	1205-1	273 (300-1)		NA	
LNAV/VNAV DA	1238-1	306 (300-1)		NA	
LNAV MDA	1320-1	388 (400-1)	1320-1 ⅛ 388 (400-1 ⅛)	NA	
CIRCLING	1480-1	531 (600-1)	1560-1 ¾ 611 (700-1 ¾)	NA	

MIRL Rwy 7-25 0  
REIL Rws 7 and 25 0