

WAAS CH 56602 W25A	APP CRS 248°	Rwy Ldg 5004 TDZE 949 Apt Elev 949
--	------------------------	---

RNAV (GPS) RWY 25

GREENE COUNTY/LEWIS A JACKSON RGNL (GDK)

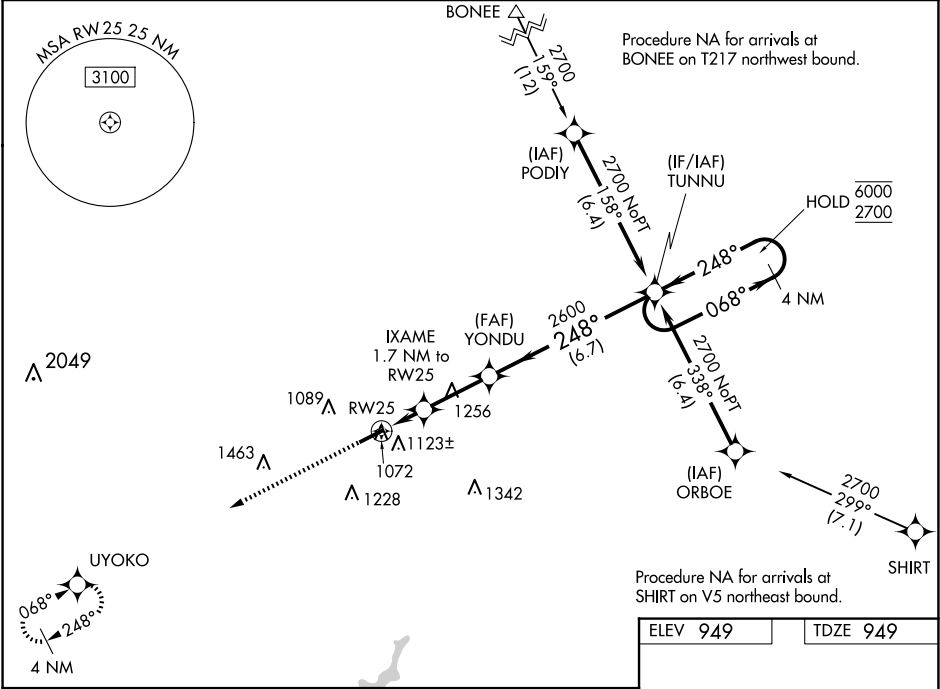
RNP APCH - GPS.

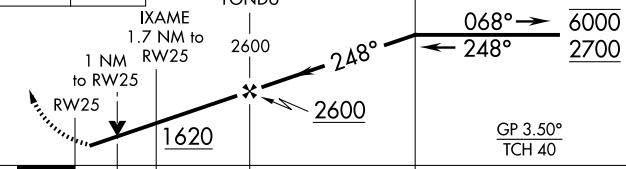

▼
▲

For uncompensated Baro-VNAV systems, LNAV/VNAV NA below -16°C or above 54°C.
Rwy 25 helicopter visibility reduction below ¾ SM NA. VDP and Baro-VNAV NA when using Dayton/Wright Brothers altimeter setting. When local altimeter setting not received, use Dayton/Wright Brothers altimeter setting: increase LPV DA to 1249 feet; increase LNAV/VNAV DA to 1252 feet; increase all MDA 40 feet and LNAV visibility Cat C ½ SM.

MISSED APPROACH:
Climb to 2700 direct UYOKO and hold.

AWOS-3 118.525	COLUMBUS APP CON 118.85 269.275	UNICOM 122.725 (CTAF) 0
--------------------------	---	-----------------------------------



2700	UYOKO	4 NM Holding Pattern			
↑	✦				
					
CATEGORY	A	B	C	D	
LPV DA	1219-1	270 (300-1)		NA	
LNAV/ VNAV DA	1222-1	273 (300-1)		NA	
LNAV MDA	1340-1	391 (400-1)	1340-1 $\frac{1}{8}$ 391 (400-1 $\frac{1}{8}$)	NA	
 CIRCLING	1480-1	531 (600-1)	1560-1 $\frac{3}{4}$ 611 (700-1 $\frac{3}{4}$)	NA	

ELEV 949 TDZE 949

Diagram showing the runway and approach path. The runway is 5004 x 75 feet. The approach path is 0.8% UP. The chart also shows the MRL Rwy 7-25 and REIL Rwy 7 and 25.

MRL Rwy 7-25 0
REIL Rwy 7 and 25 0

EC-2, 10 JUL 2025 to 07 AUG 2025

EC-2, 10 JUL 2025 to 07 AUG 2025