

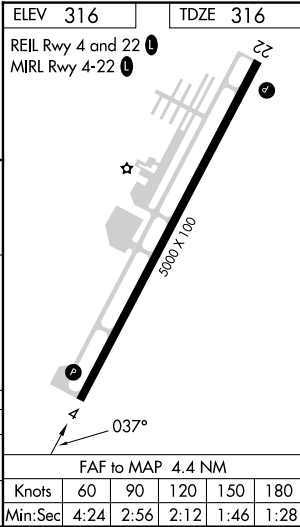
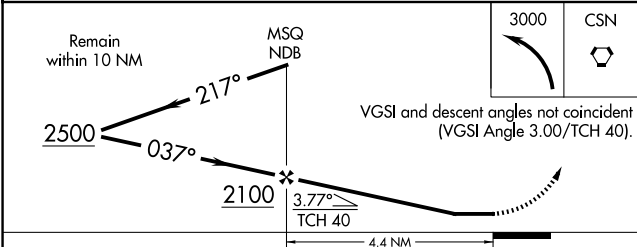
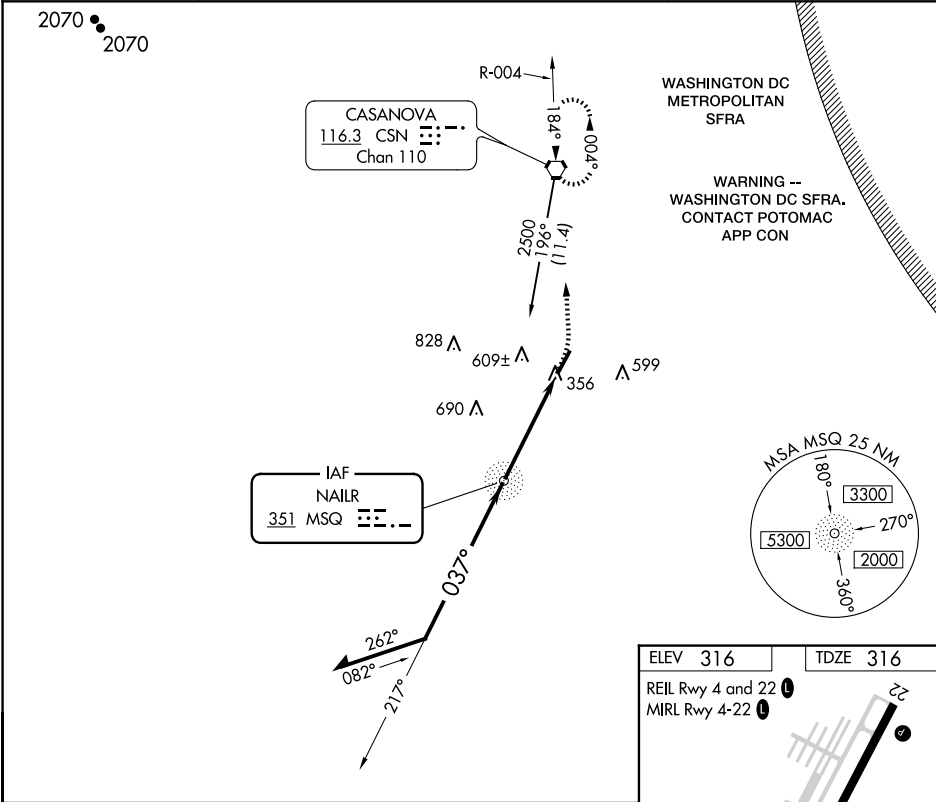
NDB	MSQ	APP CRS	Rwy Idg	5000
	351	037°	TDZE	316
			Apt Elev	316

NDB RWY 4  
CULPEPER RGNL (CJR)

⚠ Straight-in Rwy 4 at night, Circling Rwy 4, 22 at night, operational VGSI required, remain on or above VGSI glidepath until threshold.

⚠ MISSED APPROACH: Climbing left turn to 3000 direct CSN VORTAC and hold, continue climb-in-hold to 3000.

AWOS-3 119.325	POTOMAC APP CON 128.525 306.925	CLNC DEL 121.6	UNICOM 123.075 (CTAF) 0
-------------------	------------------------------------	-------------------	----------------------------



NE-3, 10 JUL 2025 to 07 AUG 2025

NE-3, 10 JUL 2025 to 07 AUG 2025