

LOC/DME I-DZH	APP CRS	Rwy ldg	5000
109.95	038°	TDZE	316
Chan 36 (Y)		Apt Elev	316

LOC RWY 4

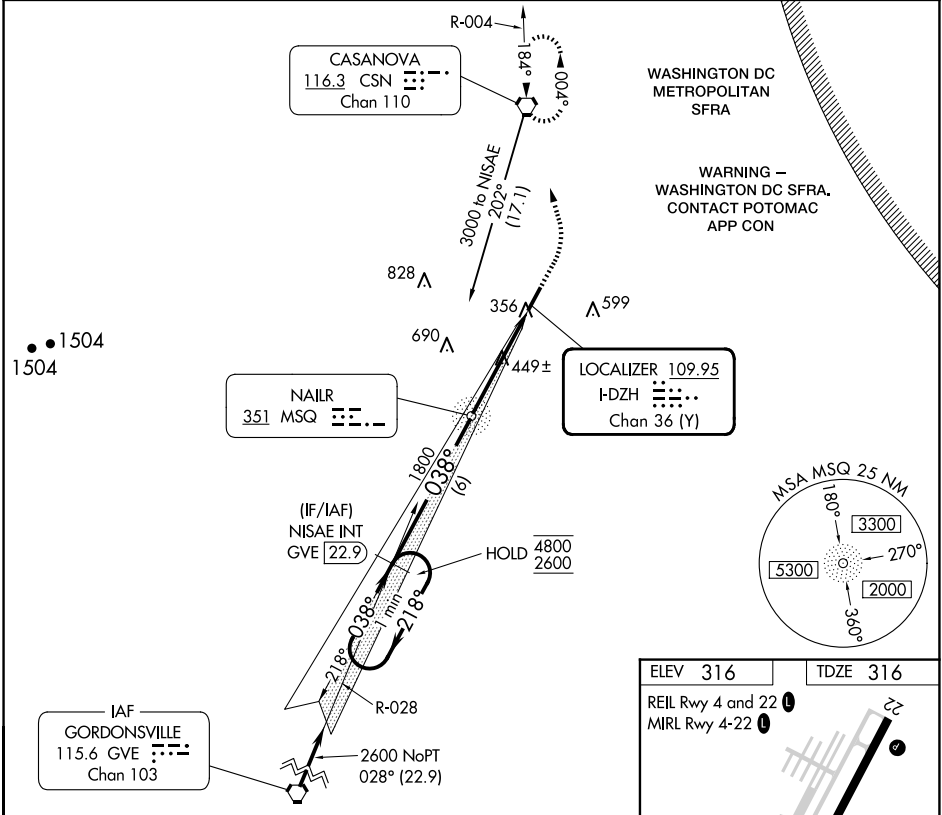
CULPEPER RGNL (CJR)

ADF required.

⚠ Straight-in Rwy 4 at night, Circling Rwy 4, 22 at night, operational VGSI required, remain on or above VGSI glidepath until threshold.

MISSED APPROACH: Climb to 800 then climbing left turn to 3000 direct CSN VORTAC and hold, continue climb-in-hold to 3000.

AWOS-3	POTOMAC APP CON	CLNC DEL	UNICOM
119.325	128.525 306.925	121.6	123.075 (CTAF) 0



One Minute Holding Pattern

NISAE GVE 22.9

800 3000 CSN

4800 2600 218° 038° 038° 1800 3.12° TCH 40

MSQ NDB

6 NM 4.4 NM

CATEGORY	A	B	C	D
S-4	700-1 384 (400-1)			NA
CIRCLING	920-1 604 (700-1)	960-1 644 (700-1)	960-1 3/4 644 (700-1 3/4)	NA

ELEV 316 TDZE 316

REIL Rwy 4 and 22

MIRL Rwy 4-22

5000 X 100

038°

FAF to MAP 4.4 NM

Knots	60	90	120	150	180
Min:Sec	4:24	2:56	2:12	1:46	1:28

NE-3, 10 JUL 2025 to 07 AUG 2025

NE-3, 10 JUL 2025 to 07 AUG 2025