

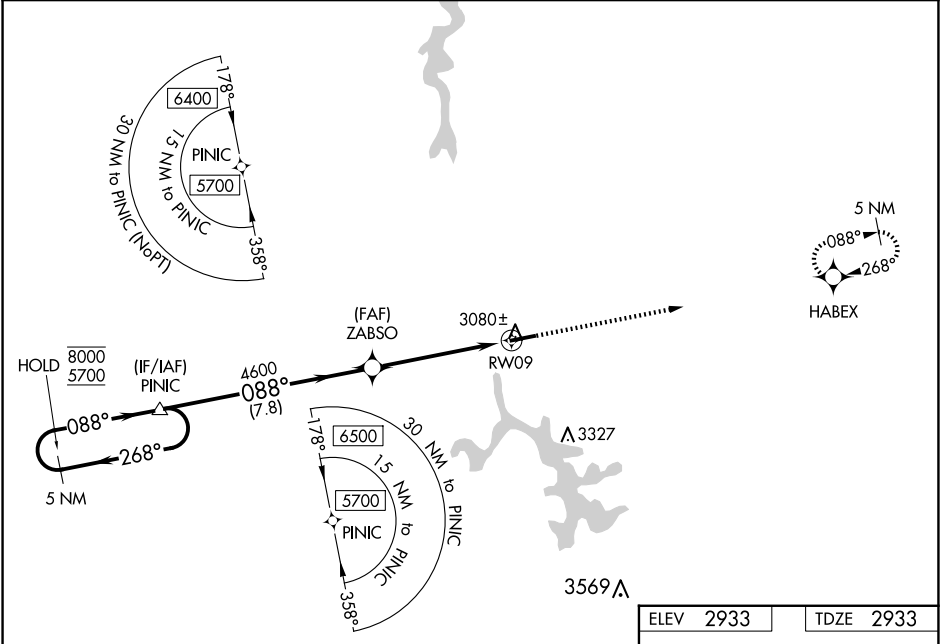
WAAS CH 69624 W09A	APP CRS 088°	Rwy Ldg 5000 TDZE 2933 Apt Elev 2933
--	------------------------	---

RNAV (GPS) RWY 9

GARRETT COUNTY (2G4)

RNP APCH - GPS.	<div><div><div><div><div></div><div></div></div><div><div></div><div></div></div></div><div><div><div></div><div></div></div><div><div></div><div></div></div></div><div><div><div></div><div></div></div><div><div></div><div></div></div></div></div><div>Rwy 9 helicopter visibility reduction below $\frac{3}{4}$ SM NA. For uncompensated Baro-VNAV systems, LNAV/VNAV NA below -20°C or above 54°C. Baro-VNAV and VDP NA when using MGW altimeter setting. When local altimeter setting not received, use MGW altimeter setting and increase LPV DA to 3483 feet and all visibilities $\frac{1}{2}$ SM. Increase LNAV/VNAV DA to 3538 feet and all visibilities $\frac{1}{2}$ SM; increase all MDAs 300 feet and LNAV visibility Cat C $\frac{1}{2}$ SM, and Circling visibility Cat C 1 SM.</div><div>MISSED APPROACH: Climb to 5600 direct HABEX and hold, continue climb-in-hold to 5600.</div></div>
-----------------	--

AWOS-3 120.125	CLARKSBURG APP CON ★ 119.425 284.65	UNICOM 123.0 (CTAF) 0
--------------------------	---	---------------------------------



ELEV 2933		TDZE 2933	
5 NM Holding Pattern		5600 HABEX	
GP 3.00 TCH 43		RWY 9	
CATEGORY	A	B	C
LPV DA	3183- $\frac{3}{4}$	250 (300- $\frac{3}{4}$)	NA
LNAV/VNAV DA	3238- $\frac{7}{8}$	305 (400- $\frac{7}{8}$)	NA
LNAV MDA	3340-1	407 (500-1)	3340-1 $\frac{1}{8}$ 407 (500-1 $\frac{1}{8}$)
CIRCLING	3380-1 447 (500-1)	3400-1 467 (500-1)	3500-1 $\frac{1}{2}$ 567 (600-1 $\frac{1}{2}$)