

WAAS CH <b>86524</b> <b>W27A</b>	APP CRS <b>268°</b>	Rwy Ldg <b>5000</b> TDZE <b>2925</b> Apt Elev <b>2933</b>
--	------------------------	---

RNAV (GPS) RWY 27

GARRETT COUNTY (2G4)

RNP APCH - GPS.

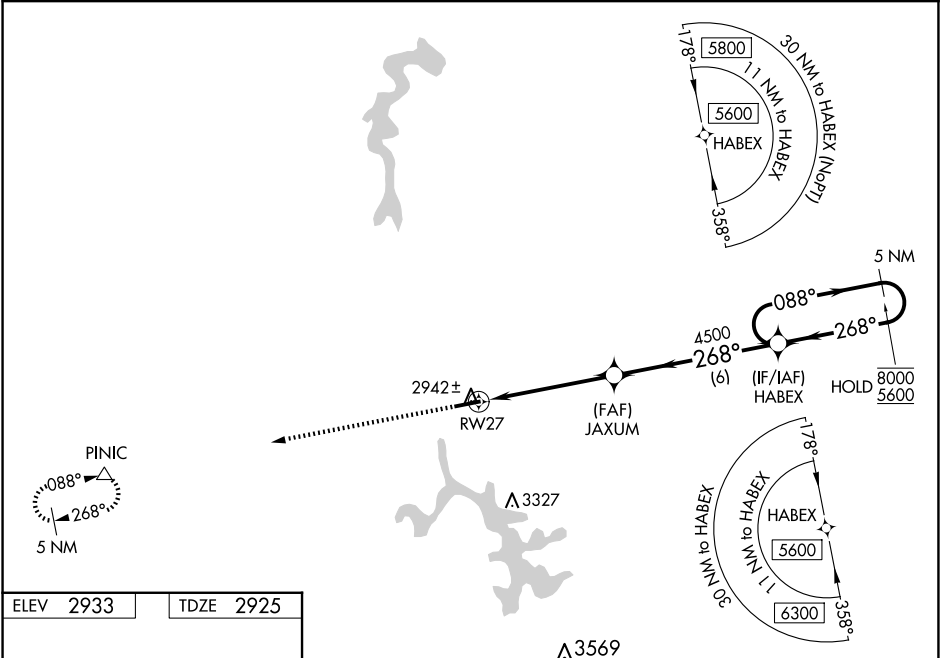
▼

▲

For uncompensated Baro-VNAV systems, LNAV/VNAV NA below -20°C or above 54°C. Baro-VNAV and VDP NA when using MGW altimeter setting. When local altimeter setting not received, use MGW altimeter setting and increase LPV DA to 3425 feet and all visibilities ¾ SM. Increase LNAV/VNAV DA to 3475 feet and all visibilities ¾ SM; increase all MDAs 300 feet and LNAV visibility Cat C ¾ SM, and Circling visibility Cat C 1 SM.

MISSED APPROACH:  
Climb 5700 direct  
PINIC and hold.

AWOS-3 <b>120.125</b>	CLARKSBURG APP CON ★ <b>119.425 284.65</b>	UNICOM <b>123.0 (CTAF) 0</b>
--------------------------	---	---------------------------------



ELEV 2933

TDZE 2925

5700 PINIC

5000 X 75

1-1% UP

268°

0.9 NM to RWY 27

0.9

4.1 NM

6 NM

0.9 NM to RWY 27

4500

268°

8000 5600

088° 268°

GP 3.00° TCH 42

CATEGORY	A	B	C	D
LPV DA	3125-1	200 (200-1)		NA
LNAV/VNAV DA	3175-1	250 (300-1)		NA
LNAV MDA	3200-1	275 (300-1)		NA
CIRCLING	3380-1 447 (500-1)	3400-1 467 (500-1)	3500-1½ 567 (600-1½)	NA

NE-3, 10 JUL 2025 to 07 AUG 2025

NE-3, 10 JUL 2025 to 07 AUG 2025