

WAAS CH <b>40115</b> <b>W33A</b>	APP CRS <b>326°</b>	Rwy Idg TDZE Apt Elev	<b>4000</b> <b>1025</b> <b>1025</b>
--	------------------------	-----------------------------	---

RNAV (GPS) RWY 33

PLATTEVILLE MUNI (PVB)

RNP APCH - GPS

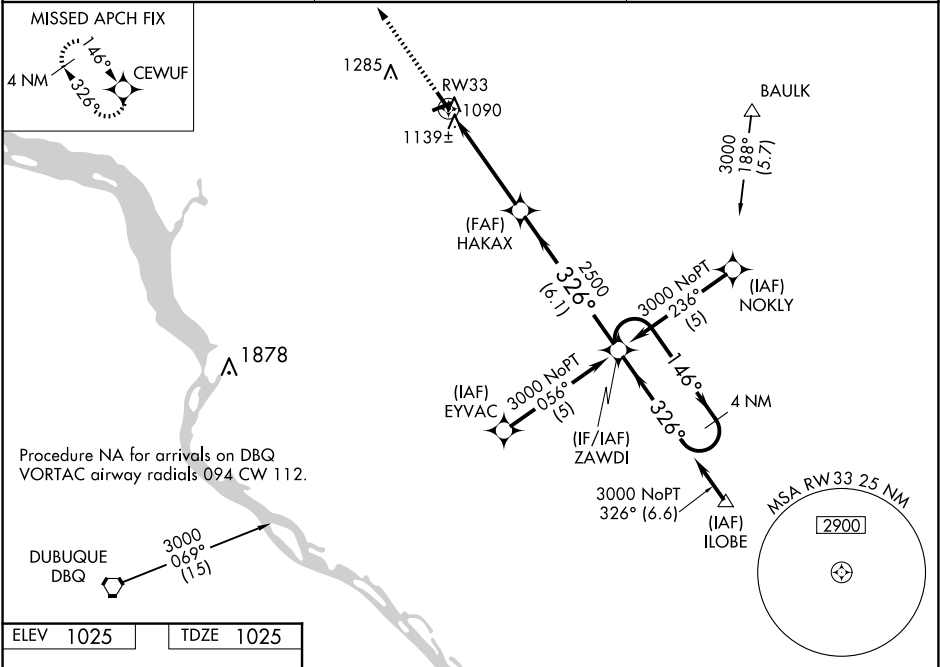
▼

⚠

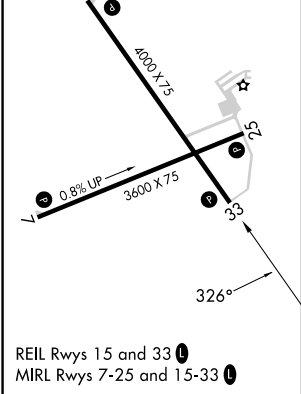
For uncompensated Baro-VNAV systems, LNAV/VNAV NA below -17°C or above 54°C. When local altimeter setting not received, use DBQ altimeter setting and increase LPV DA to 1331 feet; increase LNAV/VNAV DA to 1497 feet and all Cals visibilities ¼ SM; increase all MDAs 60 feet, increase LNAV and Circling Cat C visibility ¼ SM. Baro-VNAV and VDP NA when using DBQ altimeter setting. Circling Rwy 7, 25 NA at night.

MISSED APPROACH:  
Climb to 3000 direct CEWUF and hold.

AWOS-3 <b>120.575</b>	CHICAGO CENTER <b>133.95 281.4</b>	UNICOM <b>122.7 (CTAF) 0</b>
--------------------------	---------------------------------------	---------------------------------



ELEV 1025	TDZE 1025
-----------	-----------



3000

CEWUF

VGSI and RNAV glidepath not coincident  
(VGSI Angle 3.00/TCH 25).

4 NM Holding Pattern

\* LNAV only

RW33

\*1.1 NM to RW33

HAKAX

326°

2500

1.1 NM

3.4 NM

6.1 NM

ZAWDI

146°

3000

GP 3.00°  
TCH 40

CATEGORY	A	B	C	D
LPV DA	1275-1	250 (300-1)		NA
LNAV/VNAV DA	1441-1½	416 (500-1½)		NA
LNAV MDA	1400-1	375 (400-1)		NA
CIRCLING	1460-1 435 (500-1)	1600-1 575 (600-1)	1600-1½ 575 (600-1½)	NA