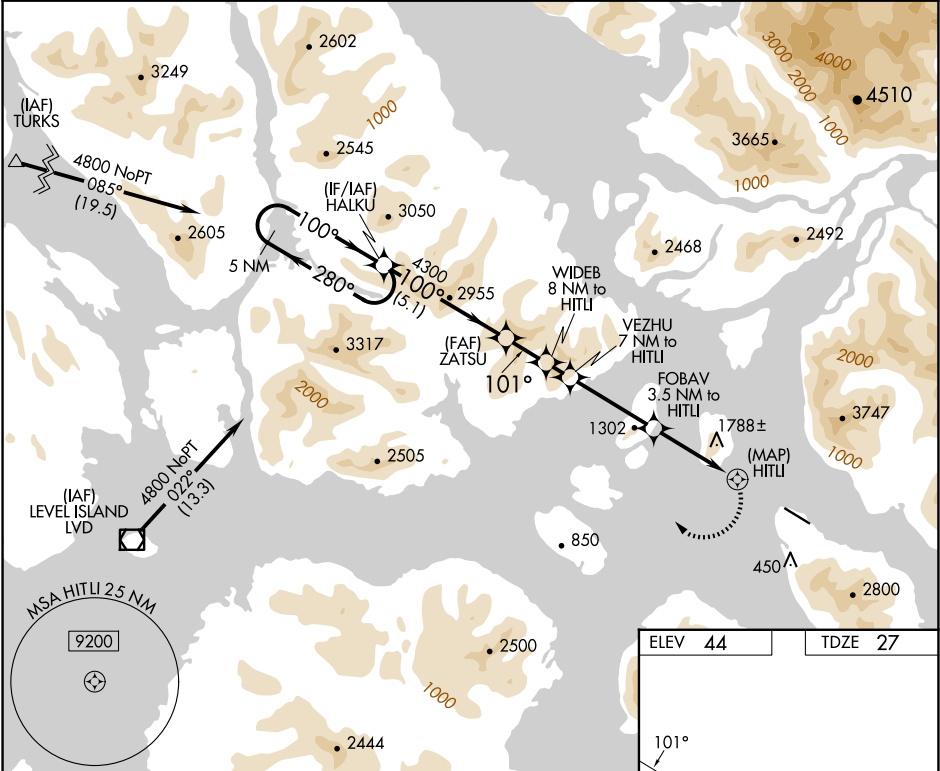


APP CRS	Rwy Ldg	6000
101°	TDZE	27
	Apt Elev	44

RNAV (GPS) RWY 10

WRANGELL (WRG) (PAWG)

RNP APCH-GPS.		MISSED APPROACH: Climbing right turn to 4800 direct HALKU and hold.	
Circling NA South of Rwy 10-28. Procedure NA at night. Helicopter visibility reduction below 1 SM NA.			
AWOS-3P 128.5	ANCHORAGE CENTER 118.0	SITKA RADIO 122.45	CTAF 122.6



<div>5 NM Holding Pattern</div> <div>4800 ← 280° → 100° →</div> <div>VGSI and descent angles not coincident (VGSI Angle 3.00/TCH 52).</div> <div>5.1 NM</div> <div>1.7 NM</div> <div>1 NM</div> <div>3.5 NM</div> <div>3.5 NM</div> <div>2 NM</div>				<div>HALKU</div> <div>4800</div> <div>HALKU</div> <div>WIDE B 8 NM to HITLI</div> <div>VEZHU 7 NM to HITLI</div> <div>FOBAV 3.5 NM to HITLI</div> <div>HITLI</div>					
CATEGORY		A		B		C		D	
LNAV MDA		2080-2½		2053 (2100-2½)		2080-3 2053 (2100-3)		NA	
CIRCLING		2080-2½		2036 (2100-2½)		2500-3 2456 (2500-3)		NA	

321

0.3% UP

6000 X 1.50

28

REIL Rwy 10 and 28  
HIRL Rwy 10-28