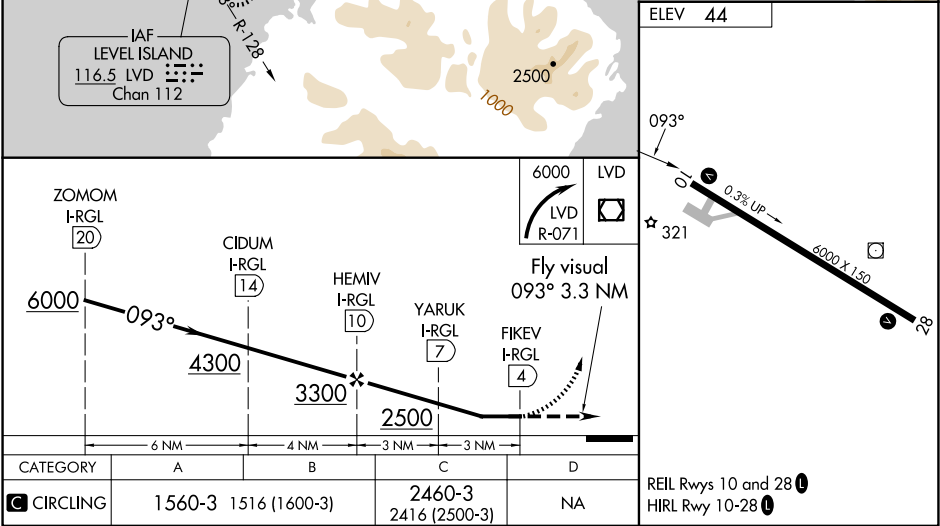
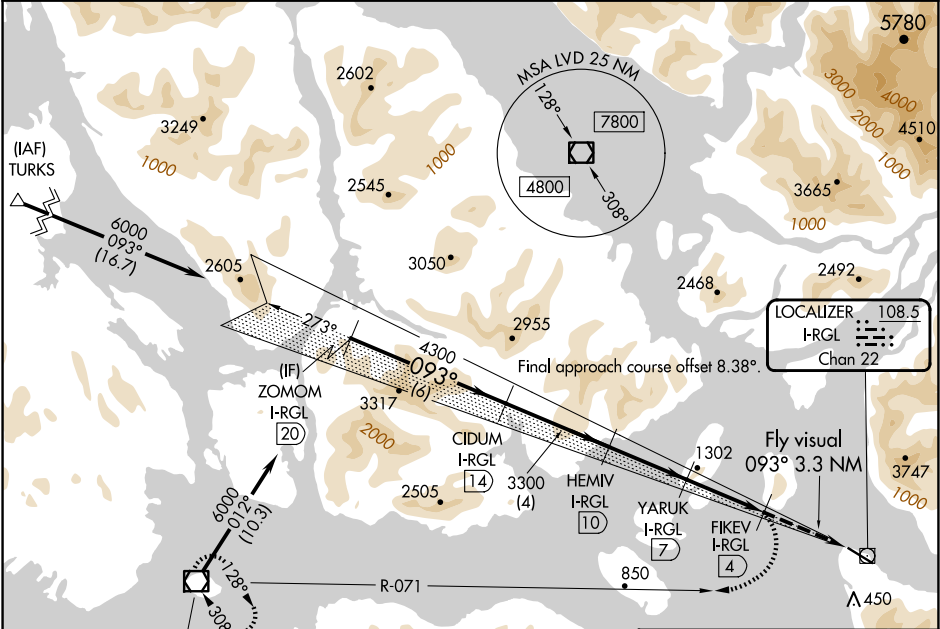


LOC/DME I-RGL <b>108.5</b> Chan <b>22</b>	APP CRS <b>093°</b>	Rwy Ldg TDZE Apt Elev <b>N/A</b> <b>N/A</b> <b>44</b>
---	------------------------	--

**LDA-C**  
WRANGELL (WRG) (PAWG)

<p>Circling NA south of Rwy 10-28. DME required. Any go-around commenced after passing the MAP will not provide standard obstacle clearance.</p>	MISSED APPROACH: Immediate climbing right turn to 6000 on LVD VOR/DME R-071 to LVD VOR/DME and hold.
--	--

AWOS-3P <b>128.5</b>	ANCHORAGE CENTER <b>118.0</b>	SITKA RADIO <b>122.45</b>	CTAF <b>122.6</b>
-------------------------	----------------------------------	------------------------------	----------------------



AK, 12 JUN 2025 to 07 AUG 2025

AK, 12 JUN 2025 to 07 AUG 2025