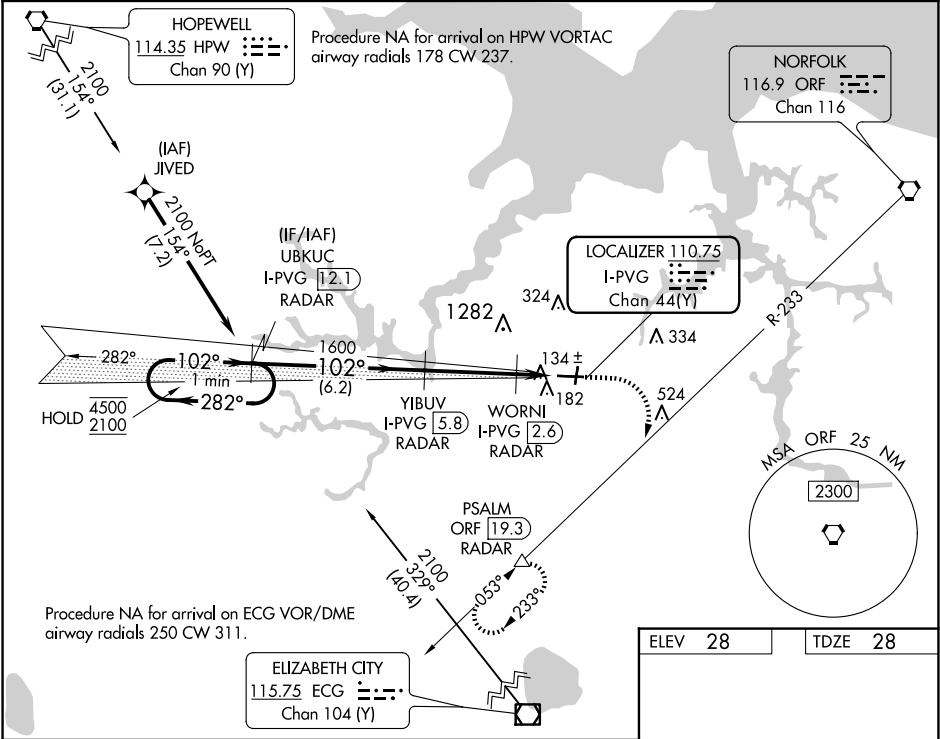


LOC/DME I-PVG 110.75 Chan 44 (Y)	APP CRS 102°	Rwy Idg TDZE 28 Apt Elev 28
--	------------------------	---

ILS or LOC RWY 10
HAMPTON ROADS EXEC (PVG)

RNAV 1-GPS or RADAR required for procedure entry. DME or RADAR required.	MISSED APPROACH: Climb to 1600 then climbing right turn to 2500 on ORF VORTAC R-233 to PSALM/ORF 19.3 DME/RADAR and hold.
NA Circling NA to Rwy's 2 and 20. Circling NA for Cat C north of Rwy's 10-28.	
NA Autopilot coupled approach NA below 800.	

AWOS-3PT 118.375	NORFOLK APP CON 118.9 353.7	UNICOM 122.725 (CTAF) 0
----------------------------	---------------------------------------	--



One Minute Holding Pattern	UBKUC I-PVG [12.1] RADAR	YIBUV I-PVG [5.8] RADAR	1600	2500	ORF R-233	PSALM
	4500 ← 282°	2100 → 102°	102°	1600	WORN I-PVG [2.6] RADAR	I-PVG [1]
GS 3.00° TCH 45						
6.2 NM 3.3 NM 1.5 NM						
CATEGORY	A	B	C	D		
S-ILS 10	228-¾	200 (200-¾)		NA		
S-LOC 10	400-1	372 (400-1)		NA		
CIRCLING	500-1	472 (500-1)	780-2¼ 752 (800-2¼)	NA		

ELEV 28	TDZE 28
HIRL Rwy 10-28 0	
REIL Rwy's 10 and 28 0	
MIRL Rwy's 2-20 0	
FAF to MAP 4.8 NM	
Knots	60 90 120 150 180
Min:Sec	4:48 3:12 2:24 1:55 1:36

NE-3, 10 JUL 2025 to 07 AUG 2025

NE-3, 10 JUL 2025 to 07 AUG 2025