

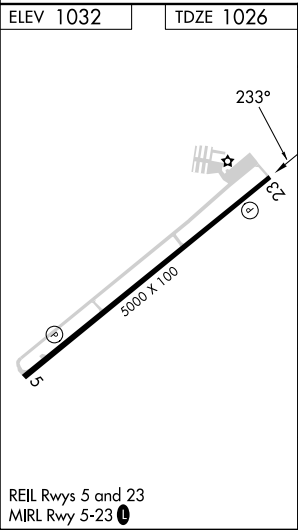
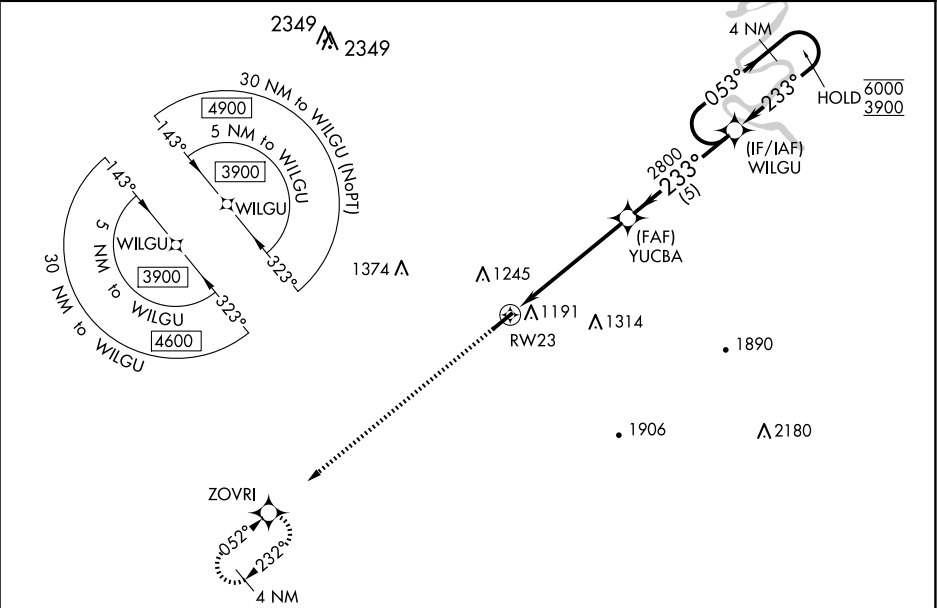
WAAS CH <b>99433</b> <b>W23A</b>	APP CRS <b>233°</b>	Rwy Idg TDZE Apt Elev	<b>5000</b> <b>1026</b> <b>1032</b>
--	------------------------	-----------------------------	---

RNAV (GPS) RWY 23

WARREN COUNTY MEML (RNC)

RNP APCH - GPS.	MISSED APPROACH: Climb to 3900 direct ZOVRI and hold, continue climb-in-hold to 3900.
<div><div>▼</div><div>▲</div></div> <div>Circling Rwy 5 NA at night. Rwy 23 helicopter visibility reduction below ¾ SM NA. For uncompensated Baro-VNAV systems, LNAV/VNAV NA below -17°C or above 54°C.</div>	

AWOS-3 <b>135.525</b>	MEMPHIS CENTER <b>128.15 323.125</b>	UNICOM <b>123.05 (CTAF) 0</b>
--------------------------	---	----------------------------------



3900	ZOVRI	VGSI and RNAV glidepath not coincident (VGSI Angle 3.00/TCH 50)		4 NM Holding Pattern
3900		1.5 NM to RW23	YUCBA 2800	WILGU 053° 6000 233° 3900
		1.5 NM	3.9 NM	5 NM
CATEGORY	A	B	C	D
LPV	DA	1312-7/8 286 (300-7/8)		
LNAV/VNAV	DA	1400-1 374 (400-1)		
LNAV	MDA	1520-1 494 (500-1)	1520-1 3/8 494 (500-1 3/8)	
CIRCLING		1600-1 568 (600-1)	1600-1 1/2 568 (600-1 1/2)	1620-2 588 (600-2)