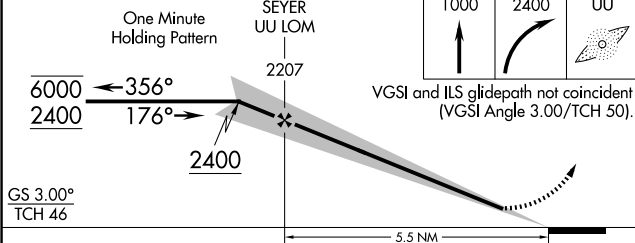
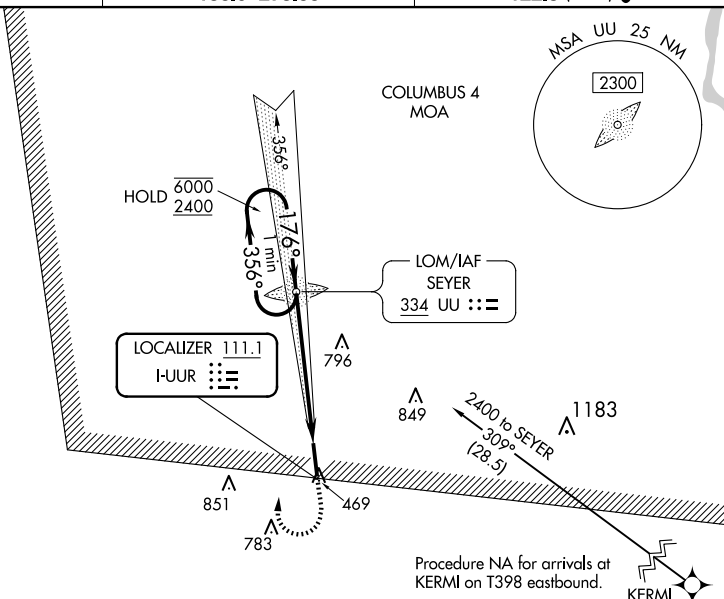



ILS or LOC RWY 18  
ROSCOE TURNER (CRX)

**MISSED APPROACH:** Climb to 1000 then climbing right turn to 2400 direct UU LOM and hold, continue climb-in-hold to 2400.

**T**  
**A** Autopilot coupled approach NA below 1040.  
For inop ALS, increase S-LOC 18 Cats C and D visibility to 1¾ SM.

UNICOM  
122.8 (CTAF) **L**

CATEGORY	A	B	C	D
S-ILS 18	614-1½ 200 (200-½)			
S-LOC 18	1020-½ 606 (600-½)		1020-1⅜ 606 (600-1⅜)	
 CIRCLING	1020-1 595 (600-1)		1100-2 675 (700-2)	1160-2¼ 735 (800-2¼)

