

DENTON, TEXAS

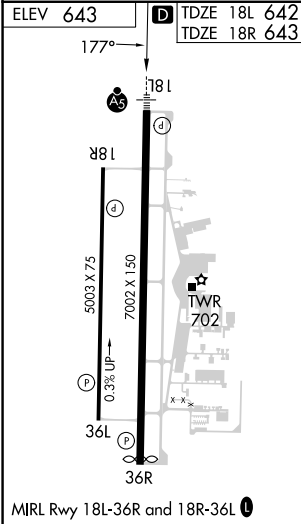
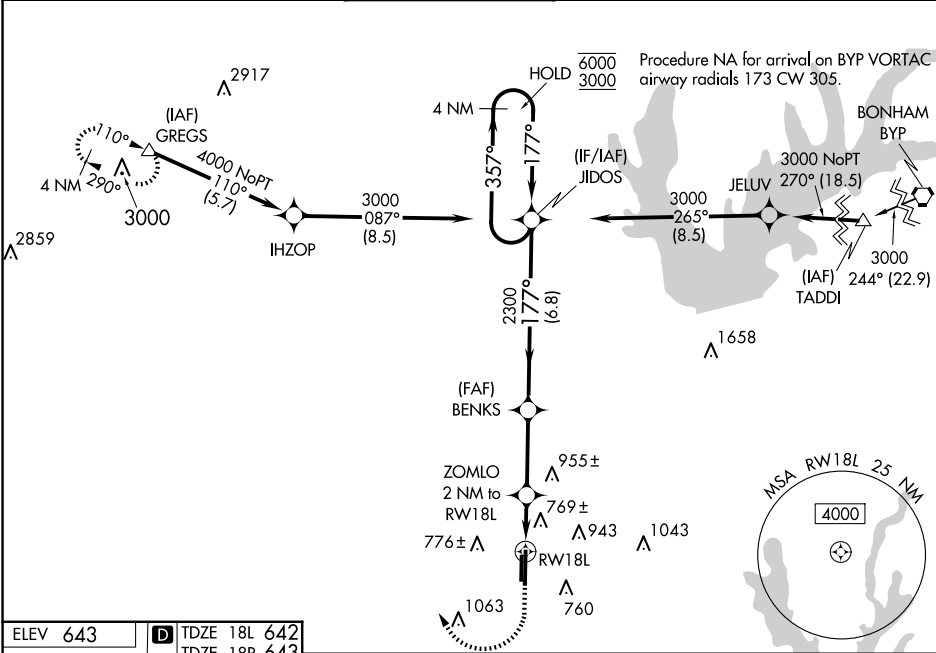
AL-5866 (FAA)

24305

WAAS CH 82143 W18A	APP CRS 177°	Rwy Idg TDZE Apt Elev	18L 6502 642 643	18R 5003 643 643
--	------------------------	-----------------------------	--	--

RNAV (GPS) RWY 18L
DENTON ENTERPRISE (D'TO)

RNP APCH-GPS. <div><div></div><div>For uncompensated Baro-VNAV systems, LNAV/VNAV NA below -9°C or above 54°C. For inop ALS, increase LNAV/VNAV all Cats visibility to 3/4 SM, and LNAV Cats C and D to 1 SM.</div></div>			MALSRL <div><div></div><div></div></div>	MISSED APPROACH: Climb to 1900 then climbing right turn to 4000 direct GREGS and hold.	
ATIS 119.325	LONE STAR APP CON 118.1 306.95	DENTON TOWER★ 119.95 (CTAF) 0	GND CON 123.95	CLNC DEL 123.95	UNICOM 122.95



1900

↑

4000

↗

GREGS

△

1 NM to RW18L

↙

1 NM

↘

1 NM

↘

3.1 NM

↘

6.8 NM

↘

1320

↘

2300

↘

2300

↘

357°

↘

177°

↘

6000

↘

3000

↘

4 NM

↘

Holding Pattern

↘

JIDOS

↘

BENKS

↘

ZOMLO

↘

2 NM to RW18L

↘

GP 3.00°

↘

TCH 50

↘

CATEGORY	A	B	C	D
LPV DA		842-½	200 (200-½)	
LNAV/VNAV DA		950-½	308 (400-½)	
LNAV MDA	1020-½ 378 (400-½)		1020-¾ 378 (400-¾)	
SIDESTEP 18R	1100-1 457 (500-1)		1100-1½ 457 (500-1½)	1100-2 457 (500-2)
CIRCLING	1100-1 457 (500-1)	1260-1 617 (700-1)	1380-2 737 (800-2)	1380-2¼ 737 (800-2¼)

DENTON, TEXAS
Orig-A 22FEB24

33°12'N-97°12' W

DENTON ENTERPRISE (D'TO)
RNAV (GPS) RWY 18L

SC-2, 10 JUL 2025 to 07 AUG 2025

SC-2, 10 JUL 2025 to 07 AUG 2025