

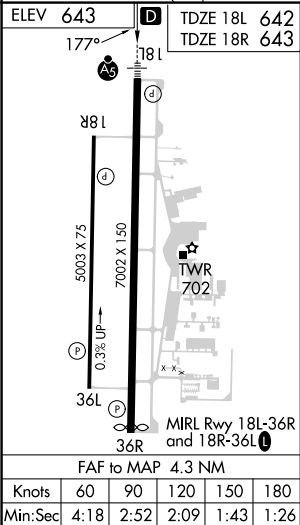
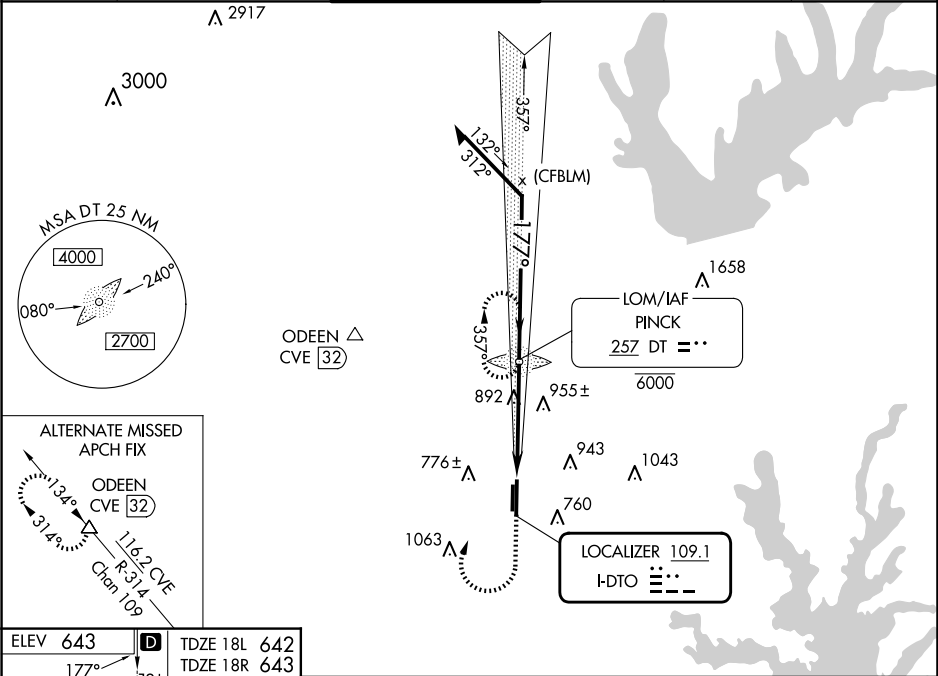


LOC I-DTO <b>109.1</b>	APP CRS <b>177°</b>	Rwy Idg	18L	18R
		TDZE	<b>6502 642</b>	<b>5003 643</b>
		Apt Elev	<b>643 643</b>	<b>643 643</b>

ILS or LOC RWY 18L

DENTON ENTERPRISE (D'TO)

ADF required. RADAR required for procedure entry.				<div>MALSR</div> <div></div>	MISSED APPROACH: Climb to 2500 then right turn direct PINCK LOM and hold.	
<div><div><div><div><div></div><div></div></div><div></div></div><div></div></div></div> <div>For inop ALS, increase S-ILS 18L all Cats visibility to ¾ SM. For inop ALS, increase S-LOC 18L Cat C/D to 1¾ SM.</div>						
ATIS 119.325	LONE STAR APP CON 118.1 306.95	DENTON TOWER ★ 119.95 (CTAF) 	GND CON 123.95	CLNC DEL 123.95	UNICOM 122.95	



2500 DT 				
VGSI and ILS glidepath not coincident (VGSI Angle 3.00/TCH 54).				
DT LOM PINCK 6000 2070 2500 2200 GS 3.00° TCH 53				
CATEGORY	A	B	C	D
S-ILS 18L	842-½		200 (200-½)	
S-LOC 18L	1160-½	518 (600-½)	1160-1	518 (600-1)
SIDESTEP 18R	1260-1	617 (700-1)	1260-1¾ 617 (700-¾)	1260-2 617 (700-2)
CIRCLING	1260-1	617 (700-1)	1380-2 737 (800-2)	1380-2¼ 737 (800-2¼)
			1380-2¼ 737 (800-2¼)	