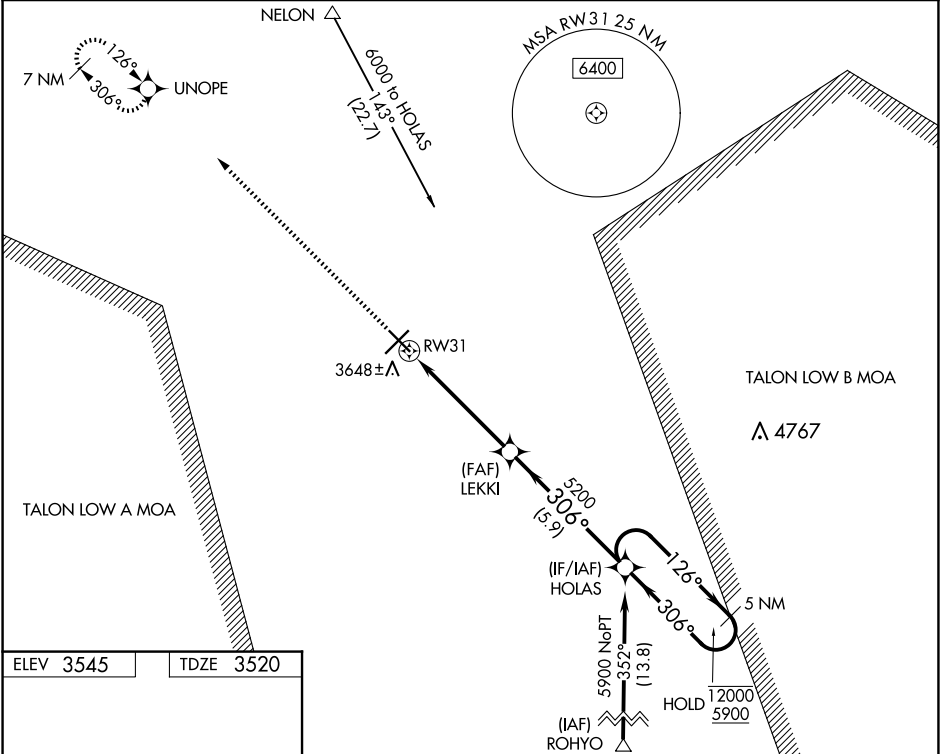


WAAS CH 82535 W31A	APP CRS 306°	Rwy Idg 6132 TDZE 3520 Apt Elev 3545
--	------------------------	---

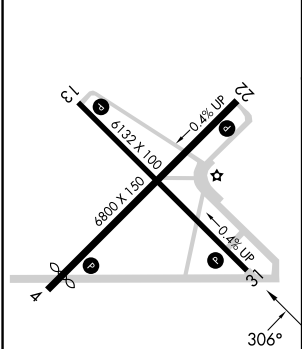
RNAV (GPS) RWY 31
ARTESIA MUNI (ATS)

RNP APCH - GPS. ▼ For uncompensated Baro-VNAV systems, LNAV/VNAV NA below -22°C or above 52°C. ▲	MISSED APPROACH: Climb to 6500 direct UNOPE and hold.
--	---

AWOS-3 126.725	ROSWELL APP CON* 119.6 239.0	UNICOM 123.075 (CTAF) 0
--------------------------	--	-----------------------------------



ELEV 3545	TDZE 3520
-----------	-----------



6500 ↑	UNOPE 	VGSI and RNAV glidepath not coincident (VGSI Angle 3.00/TCH 40).			
CATEGORY		A	B	C	D
LPV DA	3720-¾ 200 (200-¾)				
LNAV/ VNAV DA	3809-1 289 (300-1)				
LNAV MDA	3880-1 360 (400-1)				
CIRCLING	3980-1 435 (500-1)	4000-1 455 (500-1)	4040-1½ 495 (500-1½)	4240-2¼ 695 (700-2¼)	

SW-1, 10 JUL 2025 to 07 AUG 2025

SW-1, 10 JUL 2025 to 07 AUG 2025