

|  |                        |   |
|--|------------------------|---|
| WAAS<br>CH <b>58224</b><br><b>W18A</b> | APP CRS<br><b>182°</b> | Rwy Idg<br>TDZE <b>23</b><br>Apt Elev <b>23</b> |
|--|------------------------|---|

RNAV (GPS) RWY 18

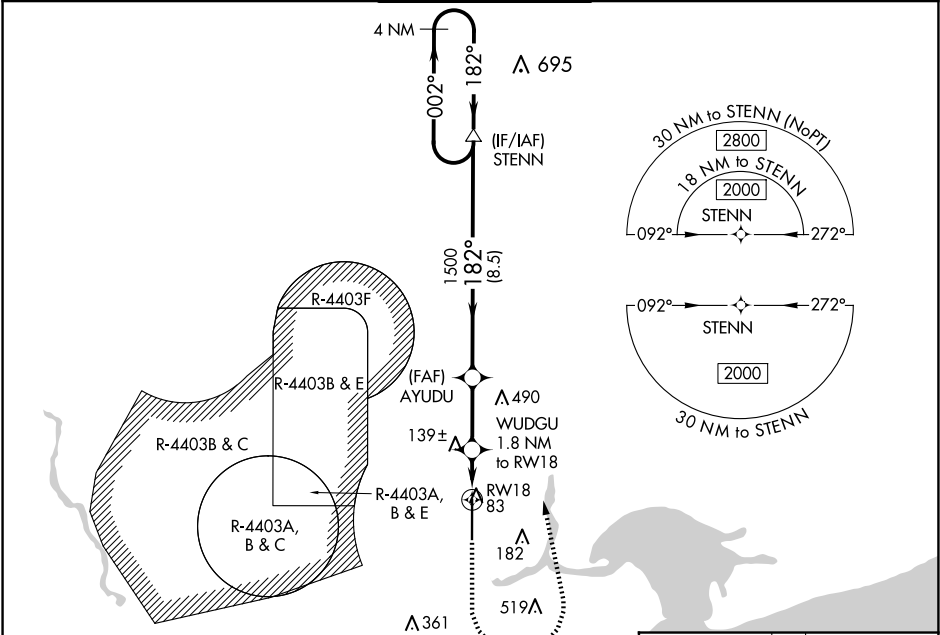
STENNIS INTL (HSA)

⚠ For uncompensated Baro-VNAV systems, LNAV/VNAV NA below -15°C (5°F) or above 54°C (130°F). Circling NA for Cat E west of Rwy 18-36. Baro-VNAV and VDP NA when using Gulfport altimeter setting. DME/DME RNP-0.3 NA. When local altimeter setting not received, use Gulfport altimeter setting: increase LPV DA to 247 feet; increase LNAV/VNAV DA to 373 feet; increase all MDA 60 feet and LNAV Cats C/D/E visibility 1/8 mile, and Circling Cats D/E visibility 1/4 mile. For inop MALS, increase LNAV Cats C/D/E visibility to 1 mile. For inop MALS when using Gulfport altimeter setting, increase LNAV Cat E visibility to 1 1/4 mile.

MALS

MISSED APPROACH:  
Climb to 1400, then  
climbing left turn to  
2000 direct STENN  
and hold.

|                            |  |   |                                 |                         |
|----------------------------|--|---|---------------------------------|-------------------------|
| AWOS-3PT<br><b>118.375</b> | GULFPORT APP CON★<br><b>124.6 354.1</b> (130°-309°)<br><b>127.5 254.25</b> (310°-129°) | STENNIS TOWER★<br><b>127.15</b> (CTAF) <b>0 229.4</b> | GND CON<br><b>121.725 229.4</b> | UNICOM<br><b>122.95</b> |
|----------------------------|--|---|---------------------------------|-------------------------|



VGSI and RNAV glidepath not coincident (VGSI Angle 3.00/TCH 56).

4 NM Holding Pattern

STENN

AYUDU

WUDGU 1.8 NM to RW18

1 NM to RW18\*

RW18

GP 3.00° TCH 56

2000

1500

1400

2000

STENN

\* LNAV only.

8.5 NM

2.7 NM

0.8 NM

1 NM

|              |                       |                           |                           |                           |   |
|--------------|-----------------------|---------------------------|---------------------------|---------------------------|---|
| CATEGORY     | A                     | B                         | C                         | D                         | E |
| LPV DA       | 223-1/2 200 (200-1/2) |                           |                           |                           |   |
| LNAV/VNAV DA | 326-1/2 303 (400-1/2) |                           |                           |                           |   |
| LNAV MDA     | 400-1/2 377 (400-1/2) | 400-5/8 377 (400-5/8)     |                           |                           |   |
| CIRCLING     | 480-1 457 (500-1)     | 520-1 1/2 497 (500-1 1/2) | 820-2 1/2 797 (800-2 1/2) | 820-2 3/4 797 (800-2 3/4) |   |

ELEV 23

**D** TDZE 23

182°

81

AS

150 X 498 8

TWR

36

REIL Rwy 36 0

HIRL Rwy 18-36 0

SC-4, 10 JUL 2025 to 07 AUG 2025

SC-4, 10 JUL 2025 to 07 AUG 2025