

LOC I-HSA	APP CRS	Rwy Idg	8498
110.35	182°	TDZE	23
		Apt Elev	23

ILS Z or LOC Z RWY 18

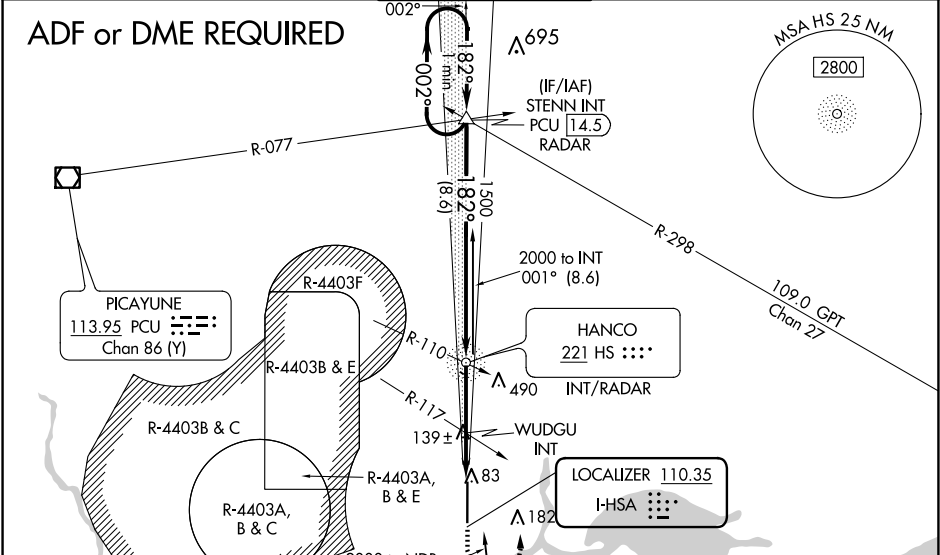
STENNIS INTL (HSA)

⚠ Circling NA for Cat E W of Rwy 18-36. ADF or DME required. When local altimeter setting not recieved, use Gulfport altimeter setting: increase DA to 270 feet; increase all MDA 60 feet and S-LOC 18 Cats C/D/E visibility ¼ mile, Circling Cat C visibility ½ mile and Cats D/E visibility ¼ mile. WUDGU FIX minimums: increase S-LOC 18 Cats C/D/E visibility ¼ mile, and Circling Cats D/E ¼ mile. For inop MALSR, increase S-ILS 18 Cat E visibility to ¾ mile, and S-LOC 18 Cats C/D/E visibility to 1 ¾ mile. WUDGU FIX minimums: increase S-LOC 18 Cats C/D/E visibility to 1 mile. For inop MALSR when using Gulfport altimeter setting, increase S-ILS 18 Cat E visibility to ¾ mile and S-LOC Cat E visibility to 1 ¾ mile. WUDGU FIX minimums: increase S-LOC 18 Cat E visibility to 1 ¼ mile.

MALSR

MISSED APPROACH:  
Climb to 700 then climbing left turn to 2000 on heading 010° and on PCU VOR/DME R-077 to STENN INT and hold.

AWOS-3PT	GULFPORT APP CON★	STENNIS TOWER★	GND CON	UNICOM
118.375	124.6 354.1 (130°-309°) 127.5 254.25 (310°-129°)	127.15 (CTAF) 0 229.4	121.725 229.4	122.95



One Minute Holding Pattern

STENN INT

HS NDB INT/RADAR

WUDGU INT

PCU R-077

STENN

2000

182°

1500

1460

520

8.6 NM

2.5 NM

1.8 NM

GS 3.00° TCH 56

CATEGORY

A	B	C	D	E
---	---	---	---	---

S-ILS 18	223-1/2 200 (200-1/2)			
S-LOC 18	520-1/2	497 (500-1/2)	520-1	497 (500-1)
CIRCLING	520-1	497 (500-1)	520-1 1/2 497 (500-1 1/2)	820-2 1/2 797 (800-2 1/2) 820-2 3/4 797 (800-2 3/4)
WUDGU FIX MINIMUMS (DUAL VOR RECEIVERS REQUIRED)				
S-LOC 18	400-1/2	377 (400-1/2)	400-5/8	377 (400-5/8)
CIRCLING	480-1	457 (500-1)	520-1 1/2 497 (500-1 1/2)	820-2 1/2 797 (800-2 1/2) 820-2 3/4 797 (800-2 3/4)

REIL Rwy 36

HIRL Rwy 18-36

FAF to MAP 4.3 NM

Knots	60	90	120	150	180
Min:Sec	4:18	2:52	2:09	1:43	1:26

ELEV 23

TDZE 23

182°

81

051 X 8678

TWR

SC-4, 10 JUL 2025 to 07 AUG 2025

SC-4, 10 JUL 2025 to 07 AUG 2025