

LOC I-HSA	APP CRS	Rwy Idg	8498
110.35	182°	TDZE	23
		Apt Elev	23

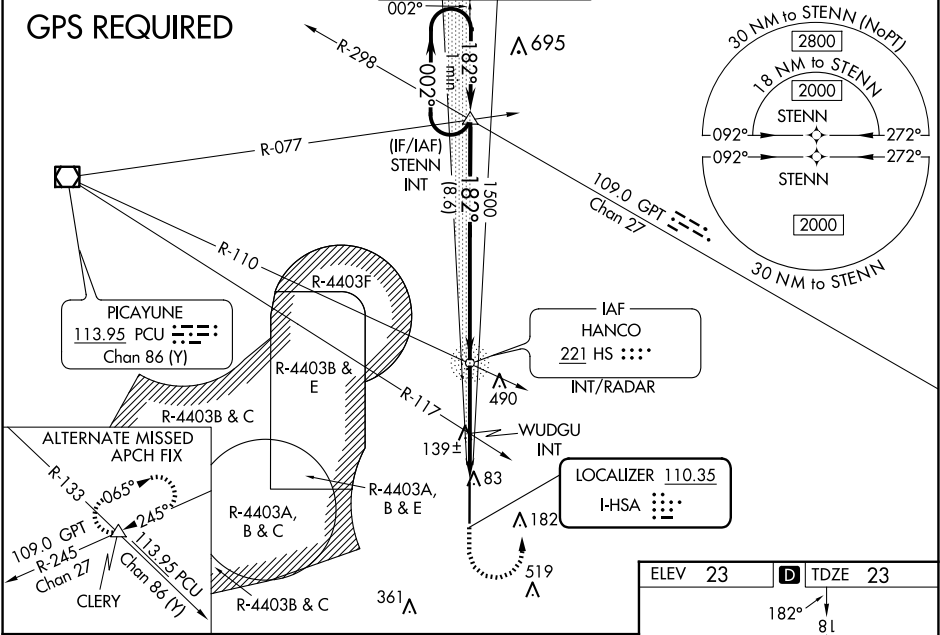
ILS Y or LOC Y RWY 18
STENNIS INTL (HSA)

⚠ Circling NA for Cat E west of Rwy 18-36. When local altimeter setting not received, use Gulfport altimeter setting: increase DA to 270 feet; increase all MDA 60 feet and S-LOC 18 Cats C/D/E visibility 1/8 mile, Circling Cat C visibility 1/4 mile and Cats D/E visibility 1/4 mile. WUDGU fix minimums: increase S-LOC 18 Cats C/D/E visibility 1/8 mile, and Circling Cats D/E visibility 1/4 mile. For inop MALS, increase S-ILS 18 Cat E visibility to 1/4 mile, and S-LOC 18 Cats C/D/E visibility to 1 1/8 mile. WUDGU fix minimums: increase S-LOC 18 Cats C/D/E visibility to 1 mile. For inop MALS when using Gulfport altimeter setting, increase S-ILS 18 Cat E visibility to 1/4 mile and S-LOC 18 Cat E visibility to 1 1/8 mile. WUDGU fix minimums: increase S-LOC 18 Cat E visibility to 1 1/4 mile.

MALS
AG

MISSED APPROACH:
Climb to 700 then climbing left turn to 2000 on heading 360° and on GPT VORTAC R-298 to STENN and hold.

AWOS-3PT 118.375	GULFPORT APP CON★ 124.6 354.1 (130°-309°) 127.5 254.25 (310°-129°)	STENNIS TOWER★ 127.15 (CTAF) 229.4	GND CON 121.725 229.4	UNICOM 122.95
---------------------	--	---------------------------------------	--------------------------	------------------



One Minute Holding Pattern

STENN INT

700

2000

STENN

hdg 360°

GPT R-298

WUDGU INT

*LOC only.

*580 when using Gulfport altimeter setting.

GS 3.00° TCH 56

2000

182°

182°

1500

1460

HS NDB/INT RADAR

8.6 NM

2.5 NM

1.8 NM

520

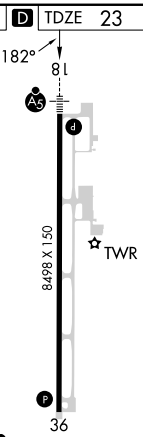
CATEGORY	A	B	C	D	E
S-ILS 18	223-1/2 200 (200-1/2)				
S-LOC 18	520-1/2 497 (500-1/2) 520-1 497 (500-1)				
CIRCLING	520-1 497 (500-1) 520-1 1/2 820-2 1/2 820-2 3/4 497 (500-1 1/2) 797 (800-2 1/2) 797 (800-2 3/4)				
WUDGU FIX MINIMUMS (DUAL VOR RECEIVERS REQUIRED)					
S-LOC 18	400-1/2 377 (400-1/2) 400-5/8 377 (400-5/8)				
CIRCLING	480-1 457 (500-1) 520-1 1/2 820-2 1/2 820-2 3/4 497 (500-1 1/2) 797 (800-2 1/2) 797 (800-2 3/4)				

REIL Rwy 36

HIRL Rwy 18-36

FAF to MAP 4.3 NM

Knots	60	90	120	150	180
Min:Sec	4:18	2:52	2:09	1:43	1:26



SC-4, 10 JUL 2025 to 07 AUG 2025

SC-4, 10 JUL 2025 to 07 AUG 2025