

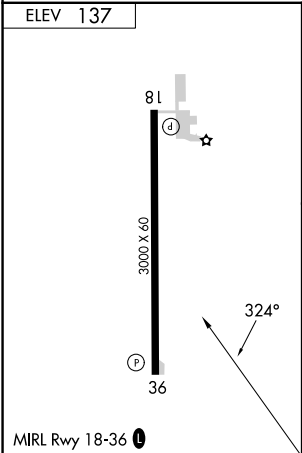
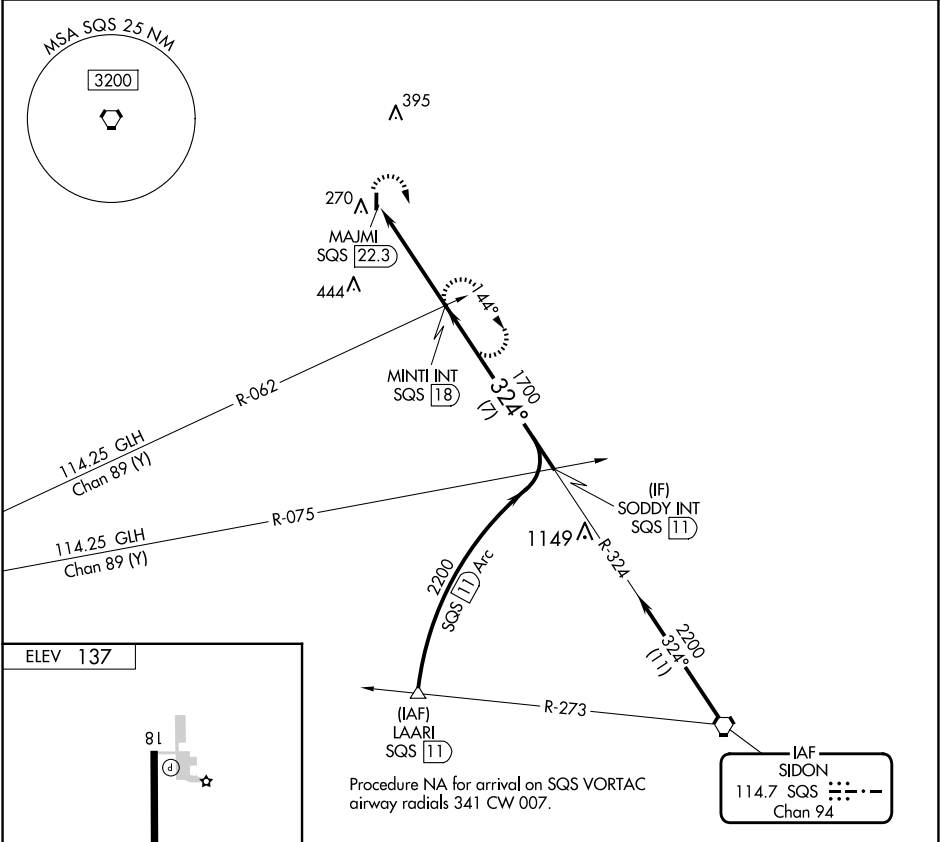
VORTAC	SQS	APP CRS	Rwy Idg	N/A
114.7		324°	TDZE	N/A
Chan 94			Apt Elev	137

VOR-A
RULEVILLE-DREW (M37)

- ⚠** Rwy 18 and 36 helicopter visibility reduction below 1 SM NA. Use Cleveland altimeter setting; when not received, use Greenwood altimeter setting and increase all MDAs 40 feet, increase Cat C visibility ¼ SM. Procedure NA at night.
- MISSED APPROACH:** Climbing right turn to 1700 on SQS VORTAC R-324 to MINTI INT/SQS 18 DME and hold.

MEMPHIS CENTER
135.875 269.35

CTAF
122.9



1700		MINTI INT	SODDY INT SQS 11	
SQS R-324			2200	
MAJMI SQS 22.3		MINTI INT SQS 18	1700	
4.3 NM		7 NM		
CATEGORY	A	B	C	D
620-1	720-1	780-1¾	NA	
483 (500-1)	583 (600-1)	643 (700-1¾)		

FAF to MAP 4.3 NM					
Knots	60	90	120	150	180
Min:Sec	4:18	2:52	2:09	1:43	1:26

SC-4, 10 JUL 2025 to 07 AUG 2025

SC-4, 10 JUL 2025 to 07 AUG 2025