

APP CRS <b>180°</b>	Rwy Idg	<b>3000</b>
	TDZE	<b>137</b>
	Apt Elev	<b>137</b>

RNAV (GPS) RWY 18

RULEVILLE-DREW (M37)

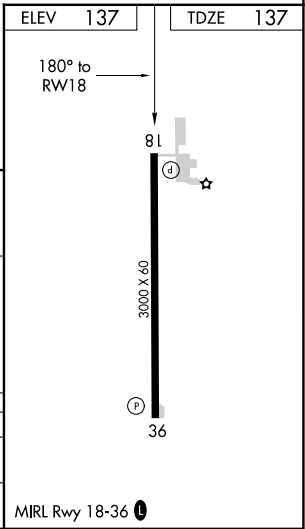
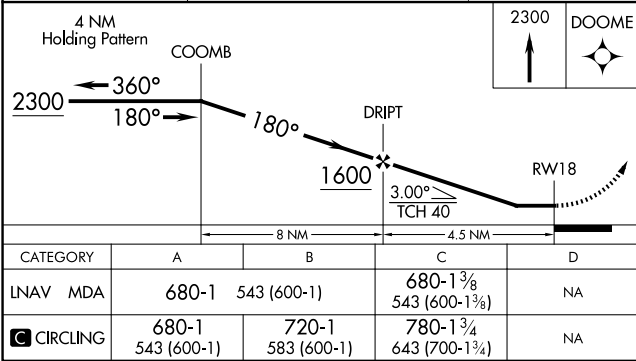
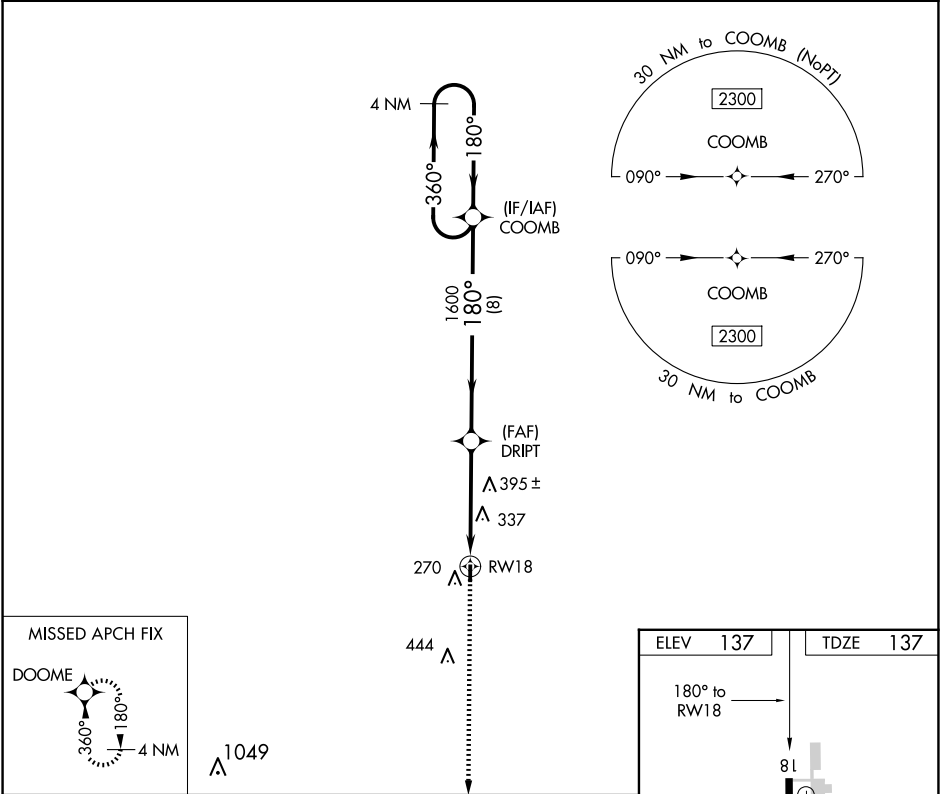
▼

▲ NA

DME/DME RNP-0.3 NA. Use Cleveland altimeter setting; when not received, use Greenwood altimeter setting and increase all MDA 40 feet and increase LNAV and Circling Cat C visibility ¼ mile. Procedure NA at night. Helicopter visibility reduction below 1 SM NA.

MISSED APPROACH: Climb to 2300 direct DOOME and hold.

MEMPHIS CENTER <b>135.875 269.35</b>	CTAF <b>122.9 0</b>
---	------------------------



SC-4, 10 JUL 2025 to 07 AUG 2025

SC-4, 10 JUL 2025 to 07 AUG 2025