

WAAS CH 97538 W13A	APP CRS 138°	Rwy Idg TDZE 1910 Apt Elev 1910
--	------------------------	---

RNAV (GPS) RWY 13

PHILLIPSBURG MUNI (PHG)

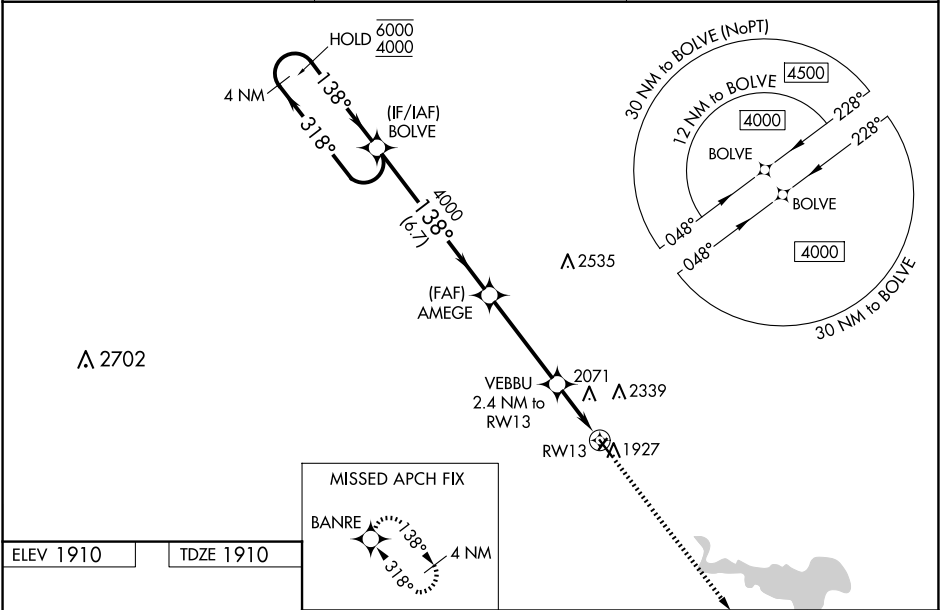
RNP APCH - GPS.

NA

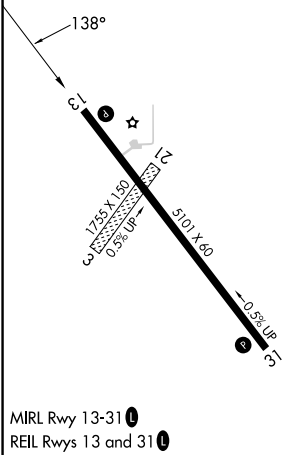
Rwy 13 helicopter visibility reduction below $\frac{3}{4}$ SM NA. Circling NA northeast of Rwy 13-31. For uncompensated Baro-VNAV systems, LNAV/VNAV NA below -18°C or above 54°C. Circling NA to Rwy's 3 and 21. Baro-VNAV and VDP NA when using HYS altimeter setting. When local altimeter setting not received, use HYS altimeter setting and increase LPV DA to 2296 feet and all visibilities $\frac{1}{8}$ SM. Increase LNAV/VNAV DA to 2497 feet and all visibilities $\frac{3}{8}$ SM. Increase all MDAs 140 feet and LNAV visibility Cat C $\frac{3}{8}$ SM, and Circling visibility Cat C $\frac{1}{4}$ SM.

MISSED APPROACH: Climb to 4000 direct BANRE and hold.

AWOS-3PT 119.125	DENVER CENTER 132.7 226.675	UNICOM 122.8 (CTAF) 0
----------------------------	---------------------------------------	---------------------------------



ELEV 1910	TDZE 1910
-----------	-----------



MISSED APCH FIX			
BANRE 4 NM			
4000 BANRE			
4 NM Holding Pattern			
6000 4000 318° 138° 138° 4000 2720 1.2 NM to RW13 1.2 NM RW13			
GP 3.00° TCH 40 6.7 NM 4 NM 1.2 NM 1.2 NM			
CATEGORY	A	B	C
LPV DA	2160-1	250 (300-1)	NA
LNAV/VNAV DA	2361-1 $\frac{3}{8}$	451 (500-1 $\frac{3}{8}$)	NA
LNAV MDA	2340-1	430 (500-1)	2340-1 $\frac{1}{4}$ 430 (500-1 $\frac{1}{4}$)
CIRCLING	2340-1 430 (500-1)	2360-1 450 (500-1)	2380-1 $\frac{1}{2}$ 470 (500-1 $\frac{1}{2}$)

NC-2, 10 JUL 2025 to 07 AUG 2025

NC-2, 10 JUL 2025 to 07 AUG 2025