

FRYEBURG, MAINE

AL-5857 (FAA)

25163

WAAS CH <b>93635</b> <b>W32A</b>	APP CRS <b>324°</b>	Rwy Ldg <b>4200</b> TDZE <b>448</b> Apt Elev <b>455</b>
--	------------------------	---

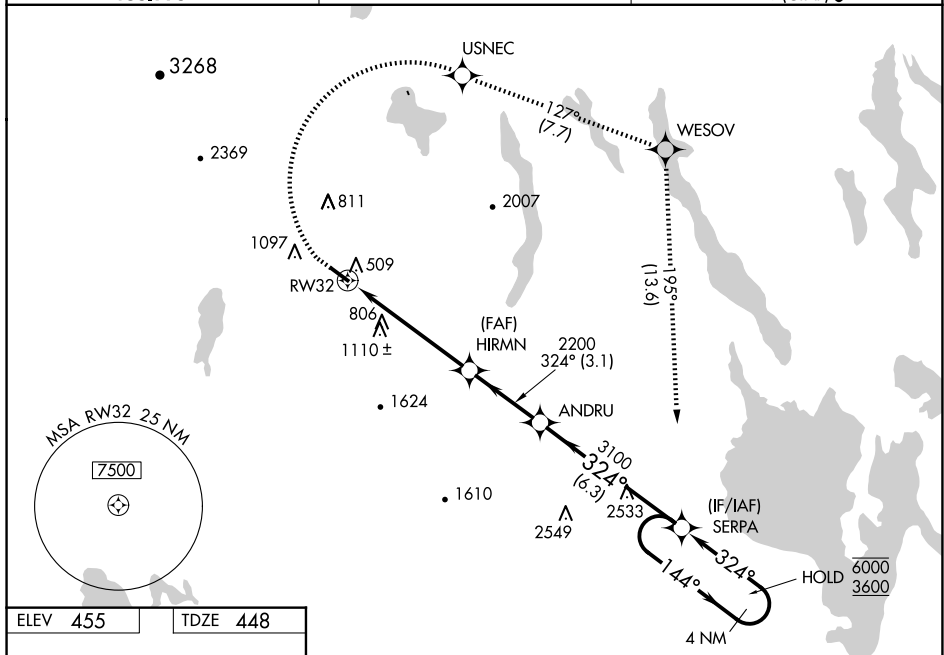
RNAV (GPS) RWY 32  
EASTERN SLOPES RGNL (IZG)

RNP APCH - GPS.

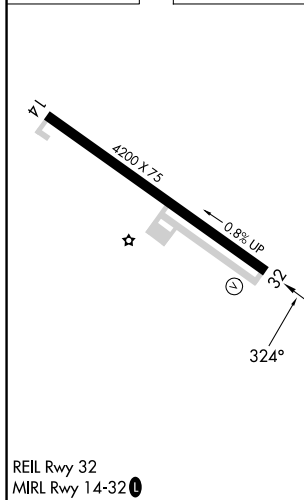
- V** Rwy 32 helicopter visibility reduction below  $\frac{3}{4}$  SM NA. VDP NA when using LEW  
**A** altimeter setting. Circling Rwy 14 NA at night. When local altimeter setting not  
 received, use LEW altimeter setting and increase LPV DA to 1005 feet and all  
 visibilities  $\frac{1}{4}$  SM; increase all MDAs 100 feet and LNAV visibility Cat B/C  $\frac{1}{2}$  SM,  
 and Circling visibility Cat B  $\frac{1}{4}$  SM.  
**✶** -28°C

**MISSED APPROACH:** Climb to 1490 then climbing right turn to 3600 direct USNEC and on track 127° to WESOV and on track 195° to SERPA and hold.

ASOS 135.775	PORTLAND APP CON ★ 119.75 269.35	UNICOM 122.8 (CTAF) 0
-----------------	-------------------------------------	--------------------------



ELEV 455		TDZE 448
----------	--	----------



1490	3600	USNEC	tr 127°	WESOV	tr 195°	SERPA	VGSI and RNAV glidepath not coincident (VGSI Angle 3.00/TCH 17).	
							<p>4 NM SERPA Holding Pattern</p>	
CATEGORY		A		B		C		D
LPV DA		914-1 $\frac{3}{8}$		466 (500-1 $\frac{3}{8}$ )				NA
LNAV MDA		1140-1 692 (700-1)		1140-2 692 (700-2)				NA
CIRCLING		1340-1 $\frac{1}{4}$ 885 (900-1 $\frac{1}{4}$ )	1400-1 $\frac{1}{2}$ 945 (1000-1 $\frac{1}{2}$ )	1560-3 1105 (1200-3)				NA

FRYEBURG, MAINE  
Amdt 2 12JUN25

EASTERN SLOPES RGNL (IZG)  
RNAV (GPS) RWY 32

43°59'N-70°57'W

NE-1, 10 JUL 2025 to 07 AUG 2025