

WAAS
CH **86816**
W06A

APP CRS
065°

Rwy ldg
TDZE **470**
Apt Elev **486**

RNAV (GPS) RWY 6

LANCASTER COUNTY-MC WHIRTER FLD (LKR)

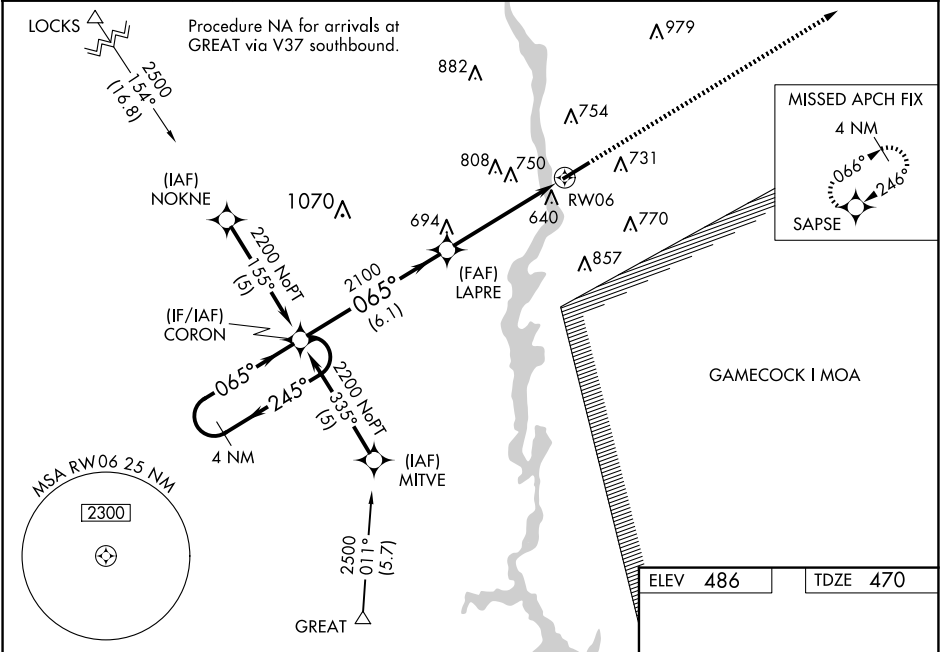
▼

▲

When VGSI inoperative, Circling Rwy 24 NA at night. Baro-VNAV NA when using Rock Hill altimeter setting. For uncompensated Baro-VNAV systems, LNAV/VNAV NA below -1.5°C (5°F) or above 48°C (118°F). DME/DME RNP -0.3 NA. When local altimeter setting not received, use Rock Hill altimeter setting and increase LPV DA 69 feet, LNAV/VNAV DA 98 feet and all MDA 80 feet, and increase LPV, LNAV/VNAV all Cats, LNAV and Circling Cats C and D visibilities ¼ mile. VDP NA when using Rock Hill altimeter setting.

MISSED APPROACH:
Climb to 2500 direct
SAPSE and hold.

AWOS-3 120.825	CHARLOTTE APP CON 120.05 307.8	GCO 121.725	UNICOM 122.725 (CTAF) 0
--------------------------	--	-----------------------	-----------------------------------



4 NM Holding Pattern

CORON

LAPRE

RW06

GP 3.00° TCH 47

2500 SAPSE

*LNAV only.

*1.4 NM to RW06

6.1 NM 3.5 NM 1.4 NM

2200 245° 065° 065° 2100

CATEGORY	A	B	C	D
LPV DA	670-¾		200 (200-¾)	
LNAV/VNAV DA	993-2		523 (600-2)	
LNAV MDA	940-1	470 (500-1)	940-1½ 470 (500-1½)	940-1½ 470 (500-1½)
CIRCLING	1040-1 554 (600-1)	1060-1 574 (600-1)	1120-1¾ 634 (700-1¾)	1160-2¼ 674 (700-2¼)

6004 X 101 0.4% UP

065° to RW06

MIRL Rwy 6-24 0

REIL Rwy 6 and 24 0