

|  |                        |                             |   |
|--|------------------------|-----------------------------|---|
| WAAS<br>CH <b>70416</b><br><b>W24A</b> | APP CRS<br><b>246°</b> | Rwy Idg<br>TDZE<br>Apt Elev | <b>6004</b><br><b>486</b><br><b>486</b> |
|--|------------------------|-----------------------------|---|

RNAV (GPS) RWY 24

LANCASTER COUNTY-MC WHIRTER FLD (LKR)

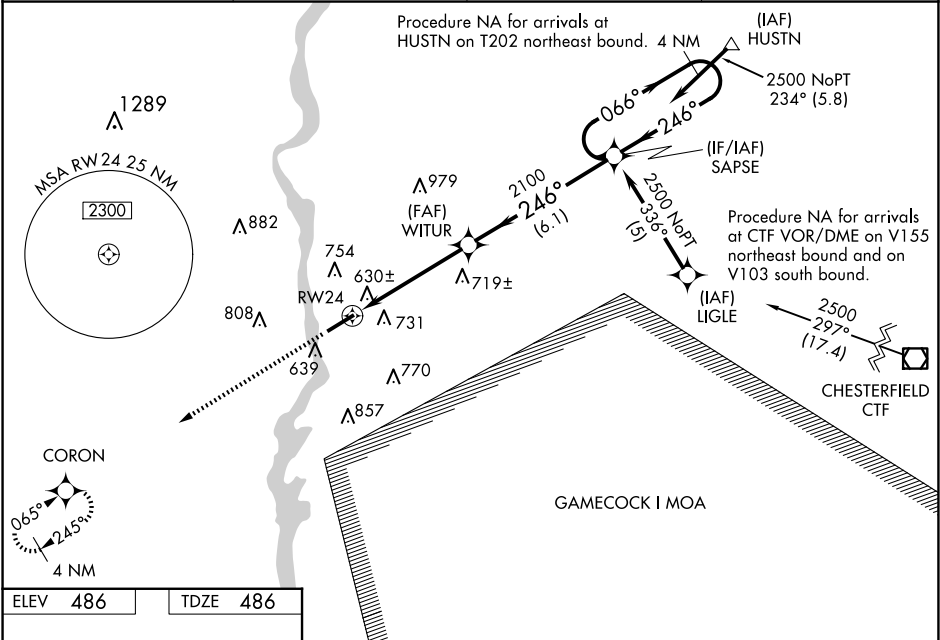
RNP APCH.

⚠

When VGSI inoperative Straight-in/Circling Rwy 24 procedure NA at night. Baro-VNAV NA when using Rock Hill altimeter setting. For uncompensated Baro-VNAV systems, LNAV/VNAV NA below -15°C or above 47°C. When local altimeter setting not received, use Rock Hill altimeter setting and increase LPV DA to 805 feet, LNAV/VNAV DA to 1086 feet, and all MDA 80 feet, increase LNAV Cat C and Circling Cats C and D visibility ¼ SM.

MISSED APPROACH:  
Climb to 2200 direct CORON and hold.

|                          |  |                       |                                   |
|--------------------------|--|-----------------------|-----------------------------------|
| AWOS-3<br><b>120.825</b> | CHARLOTTE APP CON<br><b>120.05 307.8</b> | GCO<br><b>121.725</b> | UNICOM<br><b>122.725 (CTAF) 0</b> |
|--------------------------|--|-----------------------|-----------------------------------|



2200 CORON

246° to RW24

6004 X 101

0.4% UP

MIRL Rwy 6-24 0

REIL Rwy 6 and 24 0

2100

246°

066°

2500

4.9 NM

6.1 NM

4 NM Holding Pattern

GP 3.00° TCH 43

| CATEGORY     | A                     | B                     | C                       | D                       |
|--------------|-----------------------|-----------------------|-------------------------|-------------------------|
| LPV DA       | 736-1                 |                       | 250 (300-1)             |                         |
| LNAV/VNAV DA | 1017-2                |                       | 531 (600-2)             |                         |
| LNAV MDA     | 960-1                 | 474 (500-1)           | 960-1½<br>474 (500-1½)  | 960-1½<br>474 (500-1½)  |
| CIRCLING     | 1040-1<br>554 (600-1) | 1060-1<br>574 (600-1) | 1120-1¾<br>634 (700-1¾) | 1160-2¼<br>674 (700-2¼) |