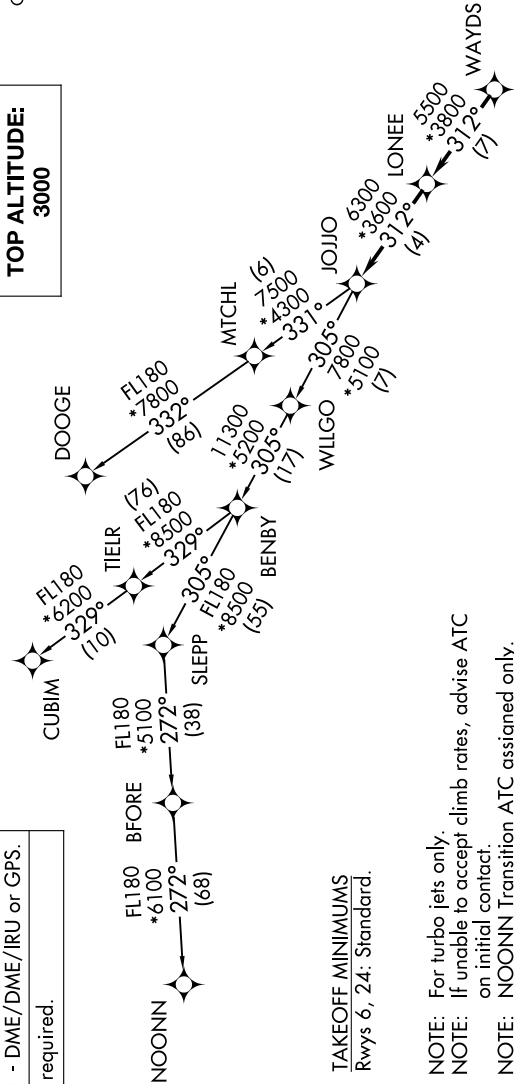


JOJO FIVE DEPARTURE (RNAV)

LANCASTER COUNTY-MC WHIRTER FLD (LKR)  
AL-5853 (FAA) LANCASTER, SOUTH CAROLINA

SE-2, 10 JUL 2025 to 07 AUG 2025

RNAV 1 - DME/DME/IRU or GPS.  
RADAR required.



TOP ALTITUDE:  
3000

CHARLOTTE DEP CON  
120.05 307.8  
AWOS-3  
120.825  
GCO  
121.725  
UNICOM (CTAF)  
122.725

TAKEOFF MINIMUMS  
Rwys 6, 24: Standard.

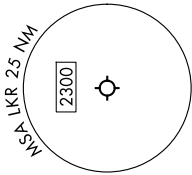
- NOTE: For turbo jets only.
- NOTE: If unable to accept climb rates, advise ATC on initial contact.
- NOTE: NOONN Transition ATC assigned only.
- NOTE: Upon reaching 10000 MSL, accelerate to and maintain 280K, if unable advise ATC.



DEPARTURE ROUTE DESCRIPTION

Climb on heading assigned by ATC, on RADAR vectors to WAYDS, then on depicted route to JOJO. Then on assigned transition. Maintain 3000, expect filed altitude within 10 minutes after departure.

- CUBIM TRANSITION (JOJO5.CUBIM)
- DOOG TRANSITION (JOJO5.DOOG)
- NOONN TRANSITION (JOJO5.NOONN)



NOTE: Chart not to scale.

JOJO FIVE DEPARTURE (RNAV)

LANCASTER, SOUTH CAROLINA  
LANCASTER COUNTY-MC WHIRTER FLD (LKR)

SE-2, 10 JUL 2025 to 07 AUG 2025