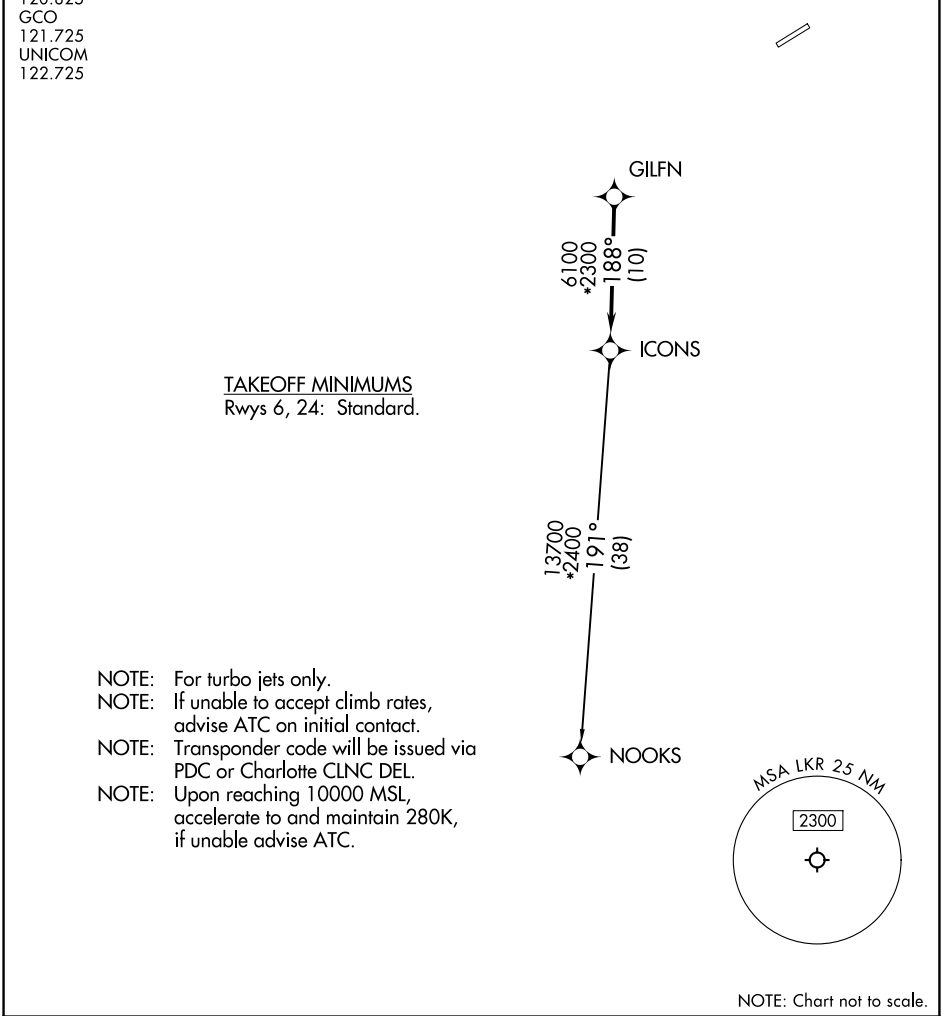


| | | |
|---|------------------------------|-----------------------|
| CHARLOTTE DEP CON 120.05 307.8 AWOS-3 120.825 GCO 121.725 UNICOM 122.725 | RNAV - 1 DME/DME/IRU or GPS. | TOP ALTITUDE: 3000 |
| | RADAR required. | |



| | |
|---|-----------------------------|
| ▼ | DEPARTURE ROUTE DESCRIPTION |
| Climb on heading assigned by ATC, expect RADAR vectors to GILFN, then on track 188° to ICONS. Then on NOOKS Transition. Maintain 3000, expect filed altitude within 10 minutes after departure. | |
| <u>NOOKS TRANSITION (ICONS5.NOOKS)</u> | |