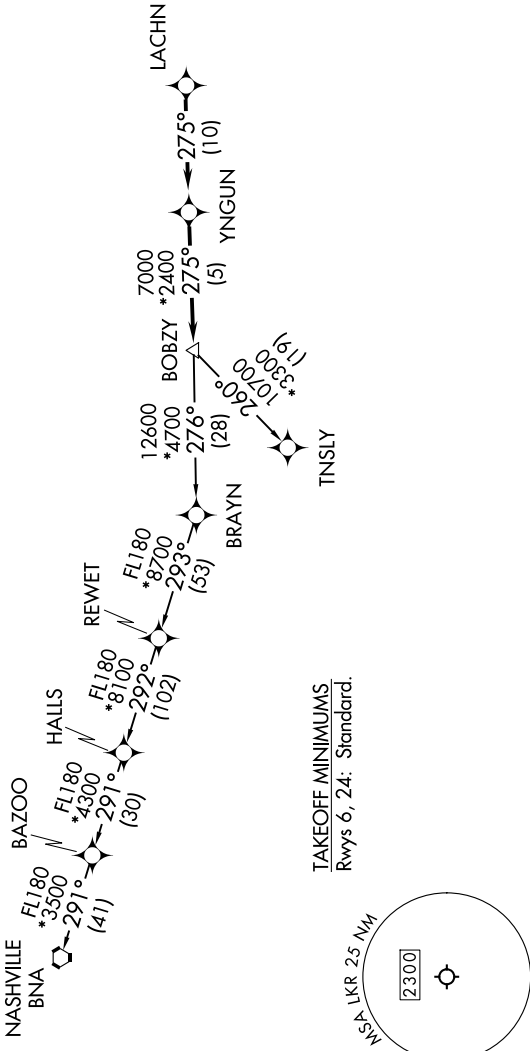


SE-2, 10 JUL 2025 to 07 AUG 2025

TOP ALTITUDE:
3000

RNAV 1-DME/DME/IRU or GPS.
RADAR required.

CHARLOTTE DEP CON
120.05 307.8
AWOS-3
120.825
GCO
121.725
UNICOM
122.725



TAKEOFF MINIMUMS
Rwys 6, 24: Standard.

DEPARTURE ROUTE DESCRIPTION

Climb on heading assigned by ATC, on RADAR vectors to LACHN, then on depicted route to BOBZY, then on assigned transition. Maintain 3000. Expect clearance to filed altitude within 10 minutes after departure.

NASHVILLE TRANSITION (BOBZY5.BNA)
TNSLY TRANSITION (BOBZY5.TNSLY)

- NOTE: For turbo jets only.
- NOTE: If unable to accept climb rates, advise ATC on initial contact.
- NOTE: Transponder code will be issued via PDC or Charlotte CLNC DEL.
- NOTE: Upon reaching 10000 MSL, accelerate to and maintain 280K, if unable advise ATC.

NOTE: Chart not to scale.

SE-2, 10 JUL 2025 to 07 AUG 2025