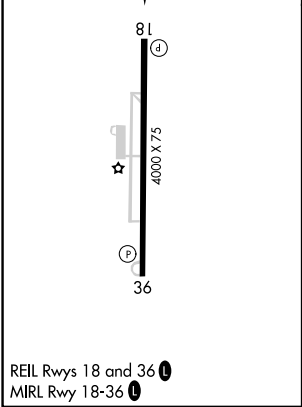
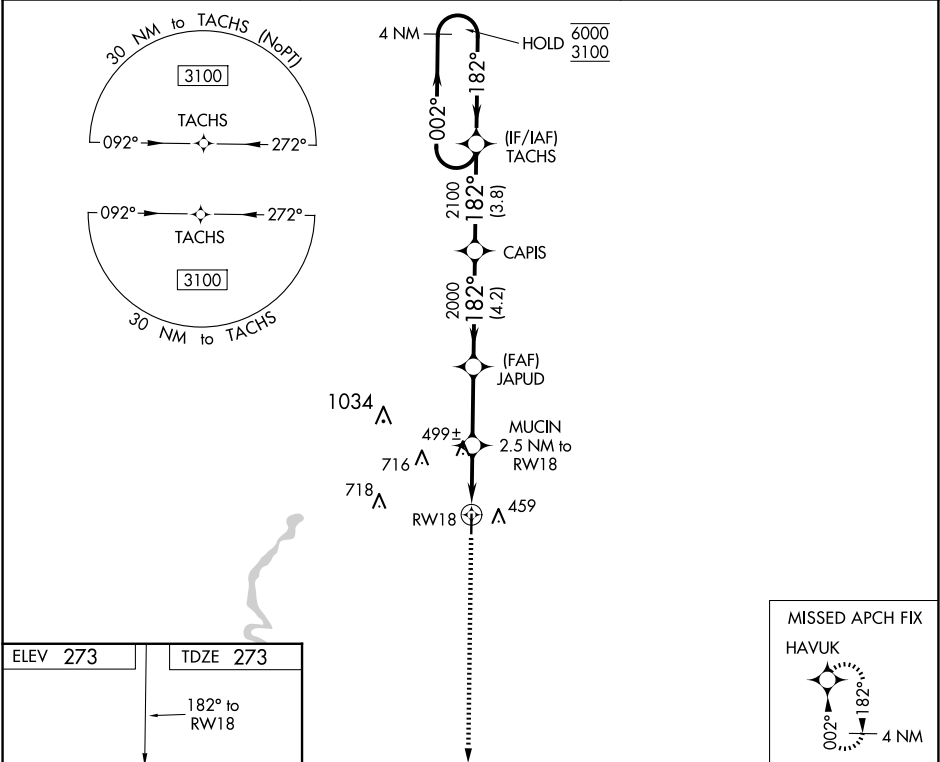


WAAS CH <b>45543</b> <b>W18A</b>	APP CRS <b>182°</b>	Rwy Idg <b>4000</b> TDZE <b>273</b> Apt Elev <b>273</b>
--	------------------------	---

RNAV (GPS) RWY 18

POCAHONTAS MUNI (M70)

RNP APCH.		MISSED APPROACH: Climb to 3100 direct HAVUK and hold.
<div><div><div><div></div><div></div></div></div><div><div></div><div></div></div></div> <div>Rwy 18 helicopter visibility reduction below ¾ SM NA. Baro-VNAV NA. Use Walnut Ridge altimeter setting.</div>		
ARG AWOS-3PT 126.525	MEMPHIS CENTER 120.075 289.4	UNICOM 122.8 (CTAF) 0



3100 ↑	HAVUK ✦	TACHS 4 NM Holding Pattern			
MUCIN 2.5 NM to RW18		JAPUD 2000	CAPIS 2100	002° → 6000 ← 182° 3100	
RW18 2.5 NM		1100 2.8 NM	2000 4.2 NM	GP 3.00° TCH 40	
CATEGORY		A	B	C	D
LPV DA		571-1 298 (300-1)			
LNAV/VNAV DA		733-1½ 460 (500-1½)			
LNAV MDA		780-1 507 (600-1)		780-1½ 507 (600-1½)	
CIRCLING		900-1 627 (700-1)		1100-2½ 827 (900-2½)	1100-2¾ 827 (900-2¾)