

WAAS CH 82618 W15A	APP CRS 151°	Rwy Idg TDZE Apt Elev	6001 121 121
--	------------------------	-----------------------------	---

RNAV (GPS) RWY 15

LINCOLN RGNL/KARL HARDER FLD (LHM)

RNP APCH

▼

For uncompensated Baro-VNAV systems, LNAV/VNAV NA below -15°C or above 48°C.

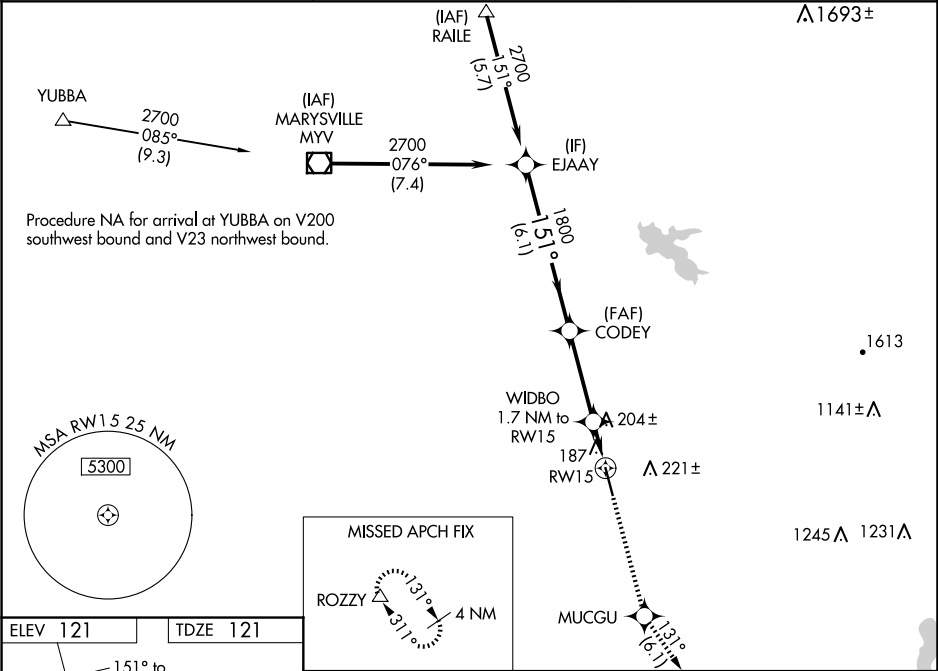
▲

VDP and Baro-VNAV NA when using Beale AFB altimeter setting. When local altimeter setting not received, use Beale AFB altimeter setting and increase LPV DA to 361 feet; increase LNAV/VNAV DA to 492 feet; increase all MDAs 40 feet and increase Circling Cat D visibility ¼ SM. For inop ALS when using Beale AFB altimeter setting, increase LNAV Cat D visibility to 1¼.

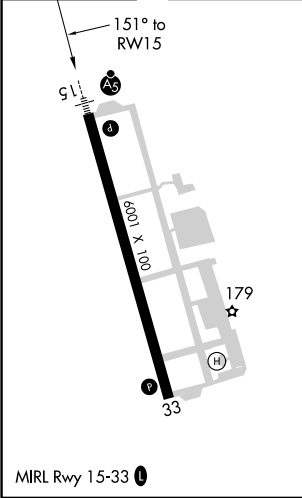
MALSR

MISSED APPROACH:
Climb to 2500 direct
MUCGU and on track
131° to ROZZY and
hold.

AWOS-3 124.25	NORCAL APP CON 125.4 259.1	UNICOM 123.0 (CTAF) 0
-------------------------	--------------------------------------	---------------------------------



ELEV 121	TDZE 121
-----------------	-----------------



MISSED APCH FIX		ROZZY		4 NM	
EJAAY		CODEY		WIDBO	
2700		1800		1.7 NM to RW15	
151°		1800		*0.9 NM to RW15	
GP 3.00°		*680		*LNAV only	
TCH 46		6.1 NM		3.4 NM	
CATEGORY		A		B	
LPV DA		321-½		200 (200-½)	
LNAV/VNAV DA		452-¾		331 (400-¾)	
LNAV MDA		460-½		339 (400-½)	
CIRCLING		520-1 399 (400-1)		580-1 459 (500-1)	
		600-1½ 479 (500-1½)		760-2 639 (700-2)	