

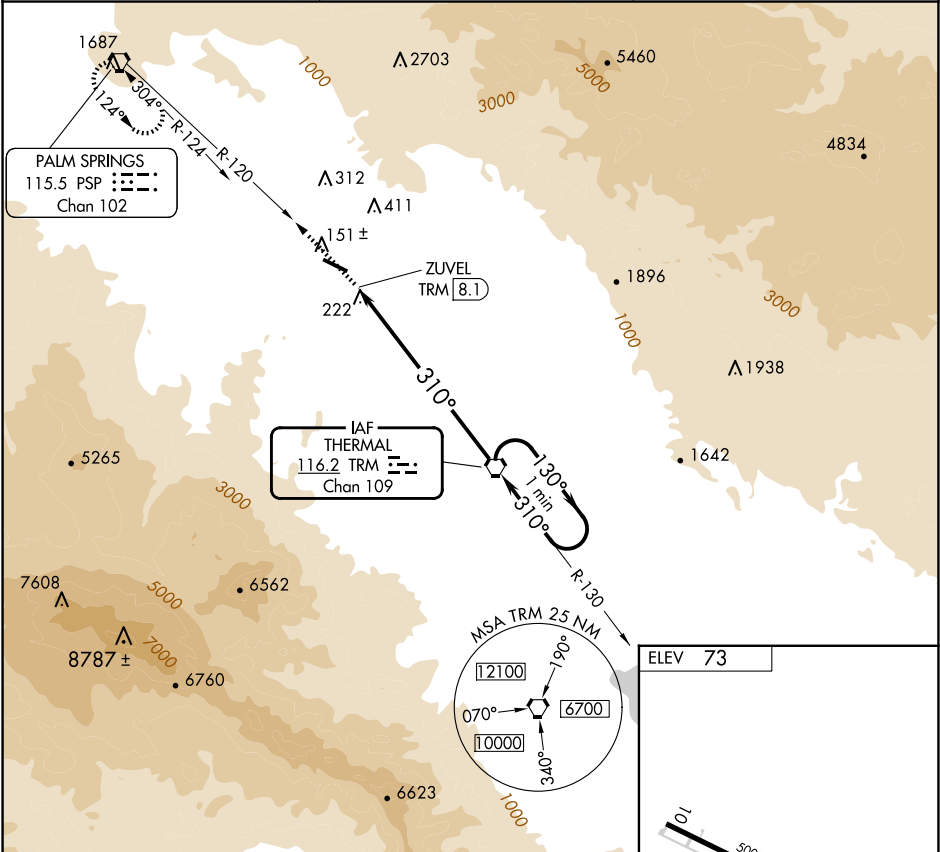
VORTAC TRM <b>116.2</b> Chan <b>109</b>	APP CRS <b>310°</b>	Rwy Ldg TDZE Apt Elev <b>N/A</b> <b>N/A</b> <b>73</b>
---	------------------------	--

VOR-C

BERMUDA DUNES (UDD)

<div><div><div>▼</div><div>▲ NA</div></div><div>Use Jacqueline Cochran Rgnl altimeter setting. Circling to Rwy 28 NA at night.</div></div> <div>MISSED APPROACH: Climb to 3300 via PSP R-120 to PSP VORTAC and hold.</div>
--

TRM ASOS <b>118.325</b>	SOCAL APP CON ★ <b>135.275 251.1</b>	UNICOM <b>122.8</b> (CTAF) <b>0</b>
----------------------------	---	--




3300

↑

PSP R-120

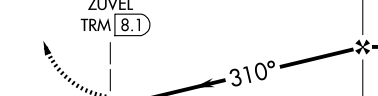
PSP



TRM VORTAC

One Minute Holding Pattern

ZUVEL TRM (8.1)



130°

← 310°

2900

REIL Rwy 28

MIRL Rwy 10-28 **0**

CATEGORY	A		B	C	D	FAF to MAP 8.1 NM					
CIRCLING	960-1¼		887 (900-1¼)	1100-3 1027 (1100-3)	NA	Knots	60	90	120	150	180
						Min:Sec	8:06	5:24	4:03	3:14	2:42

0.8

8.1 NM

0.802 X 70

0.4% UP 0.20

310°

SW-3, 10 JUL 2025 to 07 AUG 2025

SW-3, 10 JUL 2025 to 07 AUG 2025