

APP CRS
296°

Rwy Ldg
TDZE
66

Apt Elev
73

RNAV (GPS) RWY 28

BERMUDA DUNES (UDD)

RNP APCH

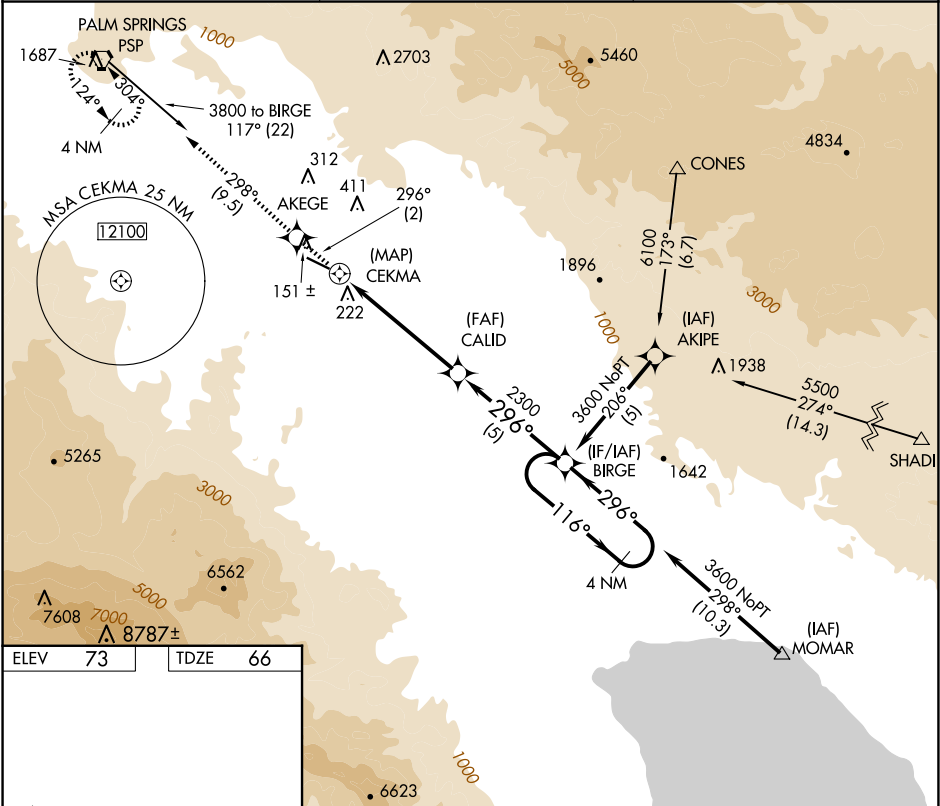
▼

▲ NA

Use Jacqueline Cochran Rgnl altimeter setting. Rwy 28 Straight-in and Circling minimums NA at night. Rwy 28 helicopter visibility reduction below 1 SM NA.

MISSED APPROACH: Climb to 3300 via course 296° to AKEGE WP then right turn via course 298° to PSP VORTAC and hold.

TRM ASOS 118.325	SOCAL APP CON ★ 135.275 251.1	UNICOM 122.8 (CTAF) 0
---------------------	----------------------------------	--------------------------



ELEV 73

TDZE 66

REIL Rwy 28

MIRL Rwy 10-28 0

3300

↑

crs 296°

AKEGE

★

crs 298°

PSP

◻

VGSI and descent angles not coincident (VGSI Angle 3.00/TCH 33).

4 NM

Holding Pattern

3600

116°

296°

3300

2300

2000

1938

1642

0.5

5.5 NM

5 NM

CEKMA

CALID

AKEGE

AKIPE

AKIPE

CATEGORY	A	B	C	D
LNVA MDA	1020-1¼ 954 (1000-1¼)	1020-1½ 954 (1000-1½)	1020-3 954 (1000-3)	NA
CIRCLING	1020-1¼ 947 (1000-1¼)	1020-1½ 947 (1000-1½)	1100-3 1027 (1100-3)	NA