

APP CRS  
**102°**

Rwy Ldg  
TDZE  
**73**

Apt Elev  
**73**

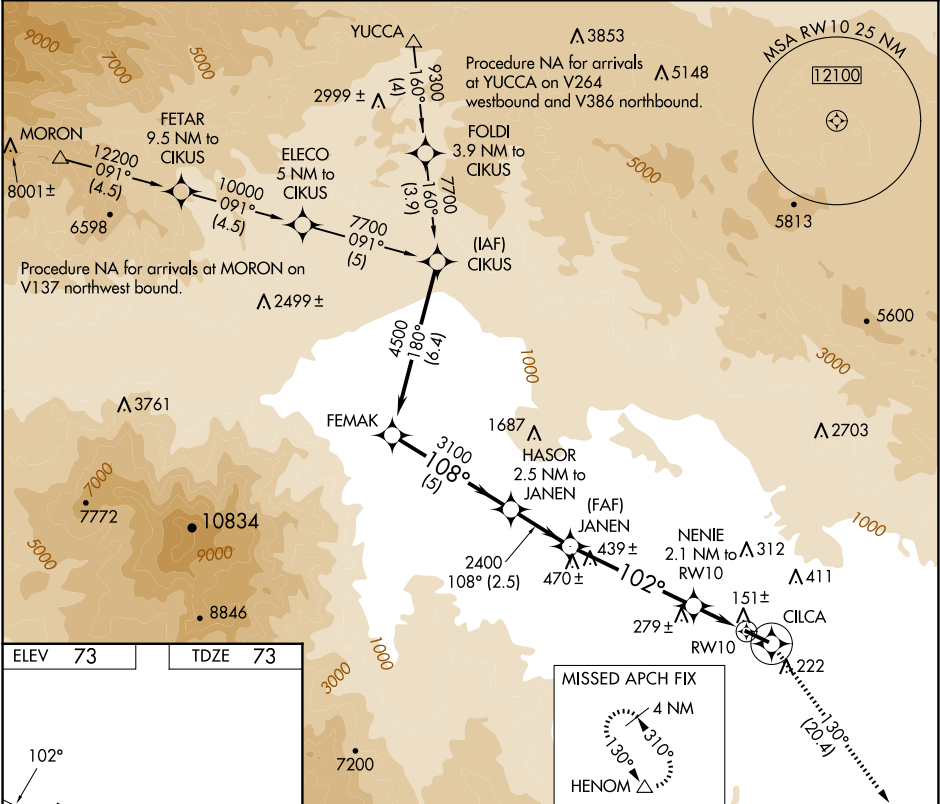
RNAV (GPS) RWY 10  
BERMUDA DUNES (UDD)

RNP APCH - GPS.

Use Jacqueline Cochran Rgnl altimeter setting.  
Circling Rwy 28 NA at night.

MISSED APPROACH: Climb to 3700 direct CILCA and via 130° track to HENOM and hold.

TRM ASOS <b>118.325</b>	SOCAL APP CON ★ <b>135.275 251.1</b>	UNICOM <b>122.8 (CTAF) 0</b>
----------------------------	-----------------------------------------	---------------------------------



ELEV 73      TDZE 73

REIL Rwy 28  
MIRL Rwy 10-28 0

FEMAK

HASOR  
2.5 NM to  
JANEN

JANEN

3700

CILCA

130°  
tr

HENOM

4500

108°

3100

2400

102°

800

RW10

5 NM

2.5 NM

4.9 NM

2.1 NM

CATEGORY	A	B	C	D
LNAV MDA	480-1	407 (500-1)	480-1¼ 407 (500-1¼)	NA
CIRCLING	700-1	627 (700-1)	1100-3 1027 (1100-3)	NA