

RNP APCH.

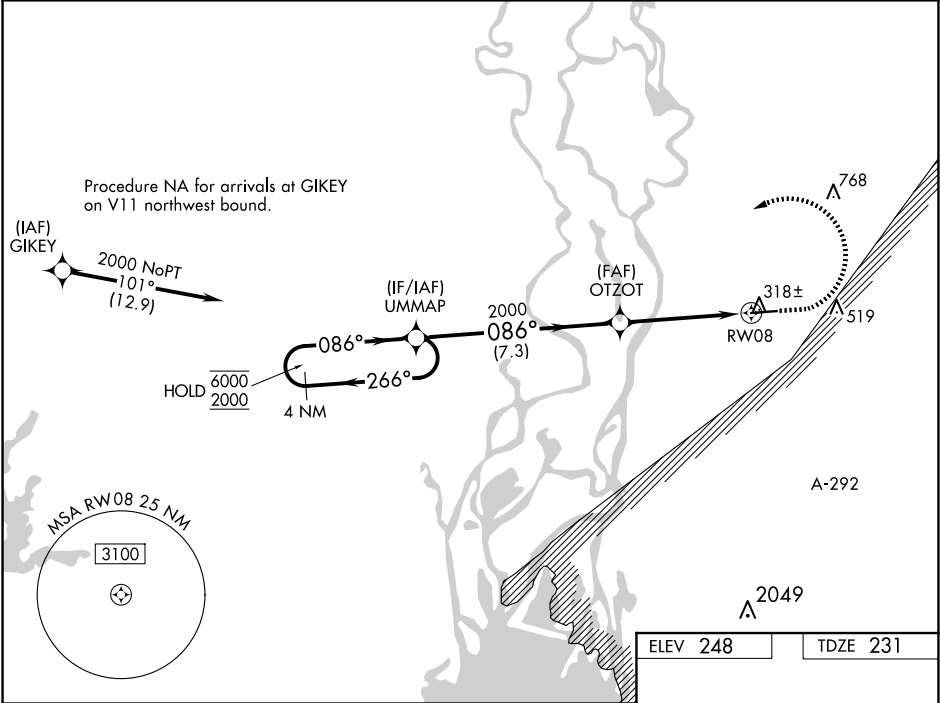
▼

▲

For uncompensated Baro-VNAV systems, LNAV/VNAV NA below -1.5°C or above 54°C. Circling Rwy 26 NA at night.

MISSED APPROACH: Climb to 800 then climbing left turn to 2000 direct UMMAP and hold.

AWOS-3PT 121.125	MOBILE APP CON ★ 118.5 269.3	UNICOM 122.8 (CTAF) 0
---------------------	---------------------------------	--------------------------



4 NM Holding Pattern		UMMAP	OTZOT	800	2000	UMMAP
6000 ← 266°		2000 → 086°	2000	0.9 NM to RW08		
GP 3.50° TCH 45						
7.3 NM		3.8 NM	0.9 NM			
CATEGORY	A	B	C	D		
LPV DA	501-1	270 (300-1)		NA		
LNAV/VNAV DA	501-1	270 (300-1)		NA		
LNAV MDA	580-1	349 (400-1)		NA		
CIRCLING	660-1 412 (500-1)	780-1 532 (600-1)	880-1¾ 632 (700-1¾)	NA		

REIL Rwy 8

MIRL Rwy 8-26 0