

WAAS CH 77735 W09A	APP CRS 093°	Rwy Idg TDZE 1198 Apt Elev 1198
--	------------------------	---

RNAV (GPS) RWY 9

PORTAGE COUNTY (POV)

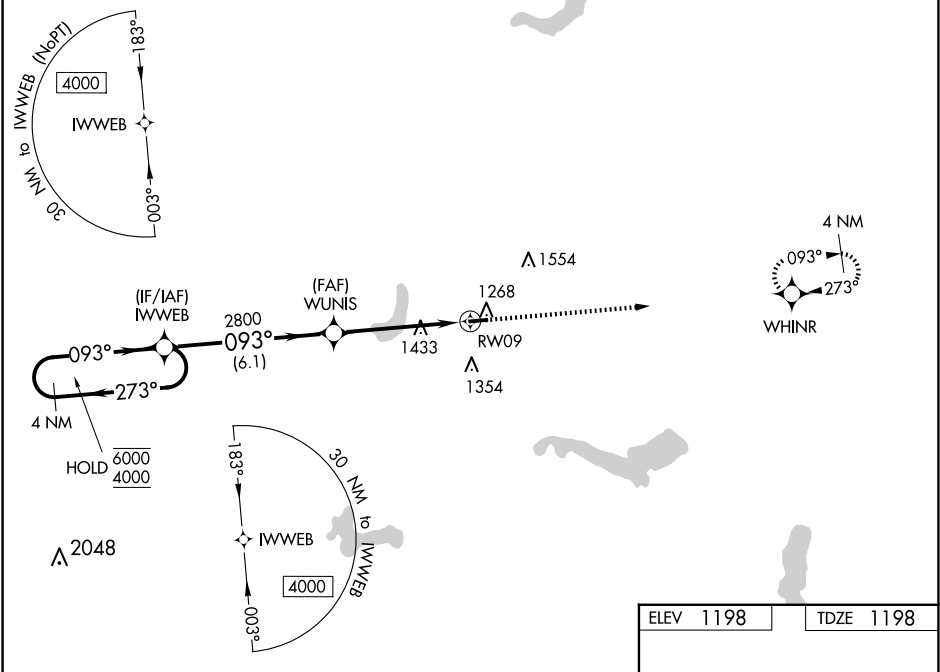
RNP APCH - GPS.

▼

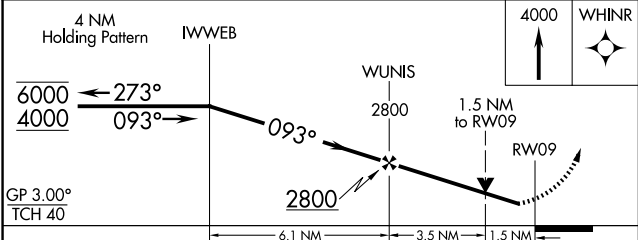
Baro-VNAV and VDP NA when using CAK altimeter setting. For uncompensated Baro-VNAV systems, LNAV/VNAV NA below -17°C or above 54°C. Rwy 9 helicopter visibility reduction below ¾ SM NA. When local altimeter setting not recieved, use CAK altimeter setting and increase LPV DA to 1498 feet. Increase LNAV/VNAV DA to 1557 feet. Increase all MDAs 60 feet and LNAV visibility Cat C ¼ SM, and Circling visibility Cat C ¼ SM.

MISSED APPROACH: Climb to 4000 direct WHNR and hold, continue climb-in-hold to 4000.

AWOS-3 118.675	CLEVELAND APP CON★ 125.5 371.875	CLNC DEL 125.65	UNICOM 123.05 (CTAF) 0
--------------------------	--	---------------------------	---



ELEV 1198	TDZE 1198
------------------	------------------



CATEGORY	A	B	C	D
LPV DA	1448-1	250 (300-1)		NA
LNAV/VNAV DA	1507-1	309 (400-1)		NA
LNAV MDA	1700-1	502 (600-1)	1700-1 5/8 502 (600-1 5/8)	NA
CIRCLING	1740-1 542 (600-1)	1800-1 602 (700-1)	1860-1 3/4 662 (700-1 3/4)	NA

