

WAAS CH 49035 W27A	APP CRS 273°	Rwy Idg TDZE 1198 Apt Elev 1198
--	------------------------	---

RNAV (GPS) RWY 27

PORTAGE COUNTY (POV)

RNP APCH - GPS.

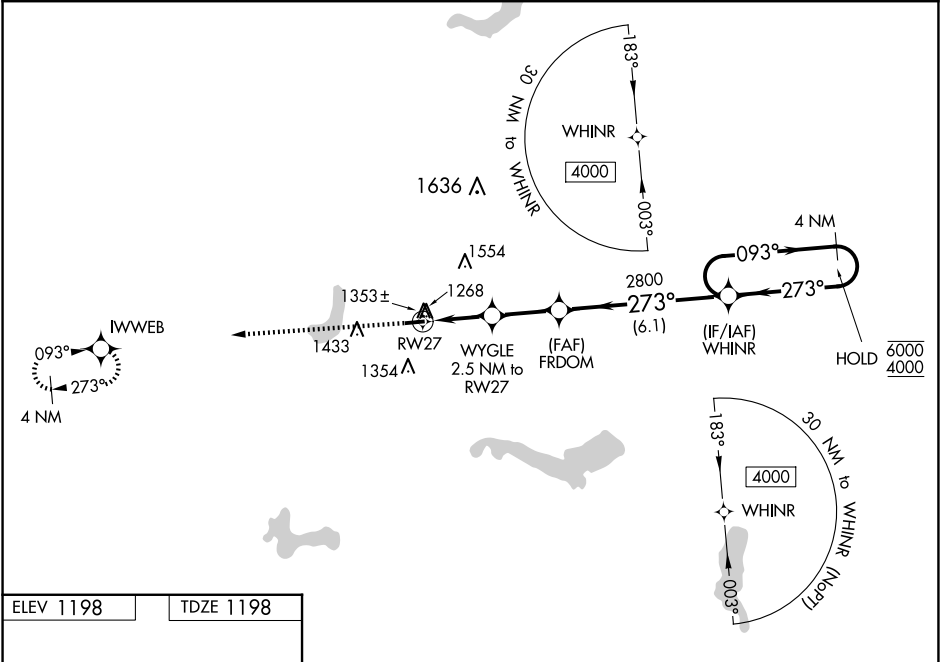
▼

Baro-VNAV and VDP NA when using CAK altimeter setting. For uncompensated Baro-VNAV systems, LNAV/VNAV NA below -17°C or above 54°C. Rwy 27 helicopter visibility reduction below ¾ SM NA. When local altimeter setting not received, use CAK altimeter setting and increase LPV DA to 1546 feet. Increase LNAV/VNAV DA to 1603 feet and all visibilities ½ SM. Increase all MDAs 60 feet; and Circling visibility Cat C ¼ SM.

MISSED APPROACH:

Climb to 4000 direct IWWEB and hold, continue climb-in-hold to 4000.

AWOS-3 118.675	CLEVELAND APP CON* 125.5 371.875	CLNC DEL 125,65	UNICOM 123.05 (CTAF) 1
--------------------------	--	---------------------------	----------------------------------



ELEV 1198

TDZE 1198

4000 IWWEB

FRDOM

WHINR

4 NM Holding Pattern

3499 X 75

27

273°

1.3 NM to RWY 27

1.2 NM

2.4 NM

6.1 NM

2020

2800

273°

093°

6000

4000

GP 3.00°

TCH 43

CATEGORY	A	B	C	D
LPV DA	1496-1	298 (300-1)		NA
LNAV/VNAV DA	1553-1	355 (400-1)		NA
LNAV MDA	1640-1	442 (500-1)	1640-1 3/8 442 (500-1 3/8)	NA
CIRCLING	1740-1 542 (600-1)	1800-1 602 (700-1)	1860-1 3/4 662 (700-1 3/4)	NA

REIL Rwy 9 and 27 1

MIRL Rwy 9-27 1