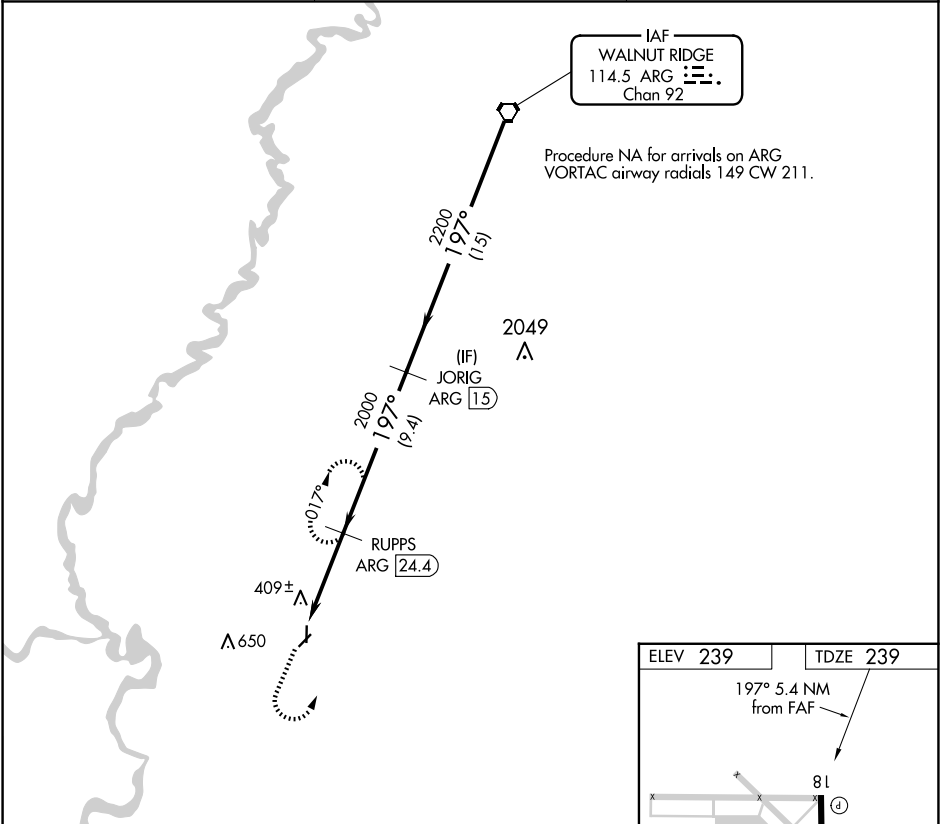


VORTAC ARG	APP CRS	Rwy Idg	5002
114.5	197°	TDZE	239
Chan 92		Apt Elev	239

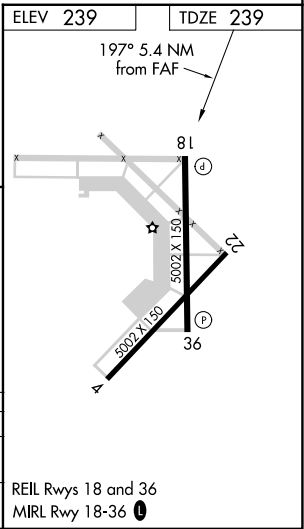
VOR RWY 18
NEWPORT RGNL (M19)

<p>When local altimeter setting not received, use Batesville altimeter setting and increase all MDAs 100 feet. DME required.</p>	<p>MISSED APPROACH: Climb to 2000 then left turn on ARG VORTAC R-197 to RUPPS/24.4 DME and hold.</p>
--	--

AWOS-3PT 118.15	MEMPHIS CENTER 120.075 289.4	UNICOM 122.8 (CTAF) 0
--------------------	---------------------------------	--------------------------



2000 ↑ ARG R-197	RUPPS ARG 24.4	VGSI and descent angles not coincident (VGSI Angle 3.00/TCH 44).		ARG VORTAC
ARG 29.8	RUPPS ARG 24.4	197°	2200	2200
TCH 49				Procedure Turn NA
5.4 NM	9.4 NM	15 NM		
CATEGORY	A	B	C	D
S-18	1300-1¼ 1061 (1100-1¼)	1300-1½ 1061 (1100-1½)	1300-3	1061 (1100-3)
CIRCLING	1300-1¼ 1061 (1100-1¼)	1300-1½ 1061 (1100-1½)	1300-3	1061 (1100-3)



SC-1, 10 JUL 2025 to 07 AUG 2025

SC-1, 10 JUL 2025 to 07 AUG 2025