

WAAS	APP CRS	Rwy Idg	3995
CH 78005	049°	TDZE	1027
W05A		Apt Elev	1072

RNAV (GPS) RWY 5

NEW CASTLE MUNI (UCP)

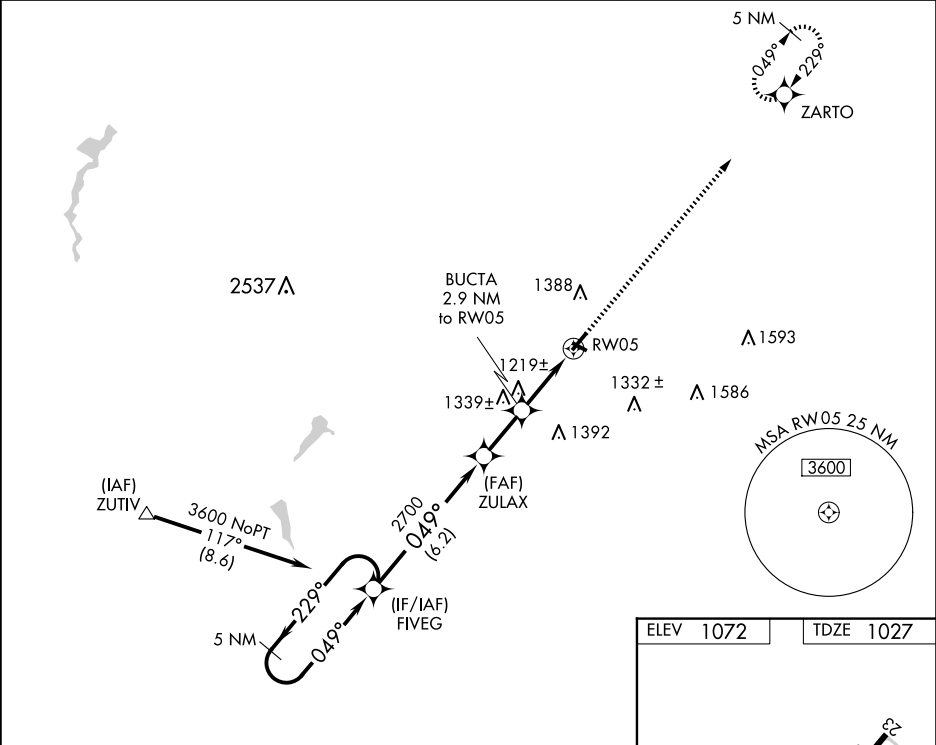
RNP APCH.

⚠

VDP NA when using Youngstown/Warren Rgnl altimeter setting. Rwy 5 helicopter visibility reduction below ¾ SM NA. When local altimeter setting not received, use Youngstown/Warren Rgnl altimeter setting and increase all DA 61 feet and all MDA 80 feet; increase LNAV Cat C and Circling Cat C visibility ¼ SM.

MISSED APPROACH:
Climb to 3000 direct ZARTO and hold.

AWOS-3PT 124.175	YOUNGSTOWN APP CON ★ 133.95 322.3	UNICOM 123.0 (CTAF) 0
---------------------	--------------------------------------	--------------------------



VGSI and RNAV glidepath not coincident (VGSI Angle 3.00/TCH 45).				
5 NM Holding Pattern				
3600 ← 229° 049° → 2700 049°				
GP 3.00° TCH 53				
FIVEG ZULAX BUCTA 2.9 NM to RW05 *2000 *1.3 NM to RW05 RW05				
6.2 NM 2.1 NM 1.6 NM 1.3 NM				
CATEGORY	A	B	C	D
LPV DA	1307-1	280 (300-1)		NA
LNAV MDA	1480-1	453 (500-1)	1480-1 3/8 453 (500-1 3/8)	NA
CIRCLING	1600-1 528 (600-1)	1700-1 628 (700-1)	1700-1 3/4 628 (700-1 3/4)	NA

ELEV 1072 TDZE 1027

REIL Rwy 5 and 23 0
MIRL Rwy 5-23 0